

Designed to support larger clients.



Total width between armrests of 540mm

Key features

- Soft seat with insert, pan and lid as standard (not shown above)
- Transit. Can be upgraded to self propel in minutes.
- Standard ocean can be upgraded to an XL by retrofitting the XL back**
- Maximum user weight 180kg (28 stone)
- 3 Year warranty
- **See overleaf for customisation with a wide range of accessories**

Assessment support

Invacare's Business Development Managers can provide support on Ocean shower chair commode assessment and selection **FREE** of charge. Contact your Invacare Business Development Manager to find out more.

* A risk assessment should always be carried out prior to the use of any product with a single carer
 **Please contact Invacare reference retrofit of XL backrest

Invacare Limited
 Pencoed Technology Park - Pencoed - Bridgend - CF35 5AQ - United Kingdom
 Tel: +44 1656 776 222
 Fax: +44 1656 776 220
 E-mail: safepatienthandling@invacare.com
 Sales Order E-mail: ordersuk@invacare.com
 www.invacare.co.uk

Invacare Ireland Ltd
 Unit 5 - Seatown Business Campus
 Seatown Road - SWORDS - County Dublin - Ireland
 Tel. +353 1 8107084
 Fax +353 1 8107085
 Email: ireland@invacare.com
 www.invacare.ie

© 2017 Invacare International Sàrl
 All rights reserved.

All information quoted is believed to be correct at time of print. Invacare reserves the right to alter product specifications without prior consultation.

Ocean Range - UK - 03/2017 - 1575042



safepatienthandling



AQUATEC OCEAN RANGE

OCEAN

AQUATEC Trusted Solutions, Passionate People



A flexible, modular shower chair commode designed to meet a range of clients and conditions.



The Ocean range is fully recyclable

Key features

- Soft seat with insert, pan and lid as standard (see overleaf)
- Self propel wheels can be retrofitted to transit version
- Maximum user weight 150kg (23 stone)
- 3 Year warranty
- **See overleaf for customisation with a wide range of accessories**

Wide range of seating and equipment available:

Aquatec® | Ocean VIP & Ocean Dual VIP

Aquatec® | Ocean E-VIP

Accessories:

Std Feature



Standard soft seat
With key shaped cut out for hygiene access.

Std Feature

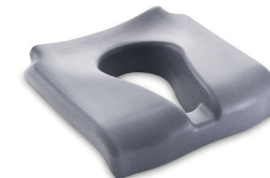


Soft seat insert
For soft seat with key-shaped cut out when commode function is not required.



Small soft seat
With small opening suitable for smaller and young adults.

Clinical Feature



Ergonomic soft seat
Allows immersion into seat for pelvic stability.



Variable soft seat
A 4-way position seat allows hygiene access from front, back and side.



Universal soft seat
Closed seat surface. Smooth and comfortable.



Splash guard/Pommel
Simply snap-on, for soft seat with key-shaped cut out.



Ocean Skirt
Provides a protective barrier between the commode aperture and automatic toilet systems.



Solid plastic backrest
Offers a stable upright position. Easy to clean.



XL back
Increase the width of the back by 80mm. Retrofit kit for the Ocean.

Clinical Feature



Soft backrest cushion
For additional stability and positioning. Will benefit small individuals and young adults.

Modular tilt in space models that can compensate for a range of postural presentations and clinical conditions.

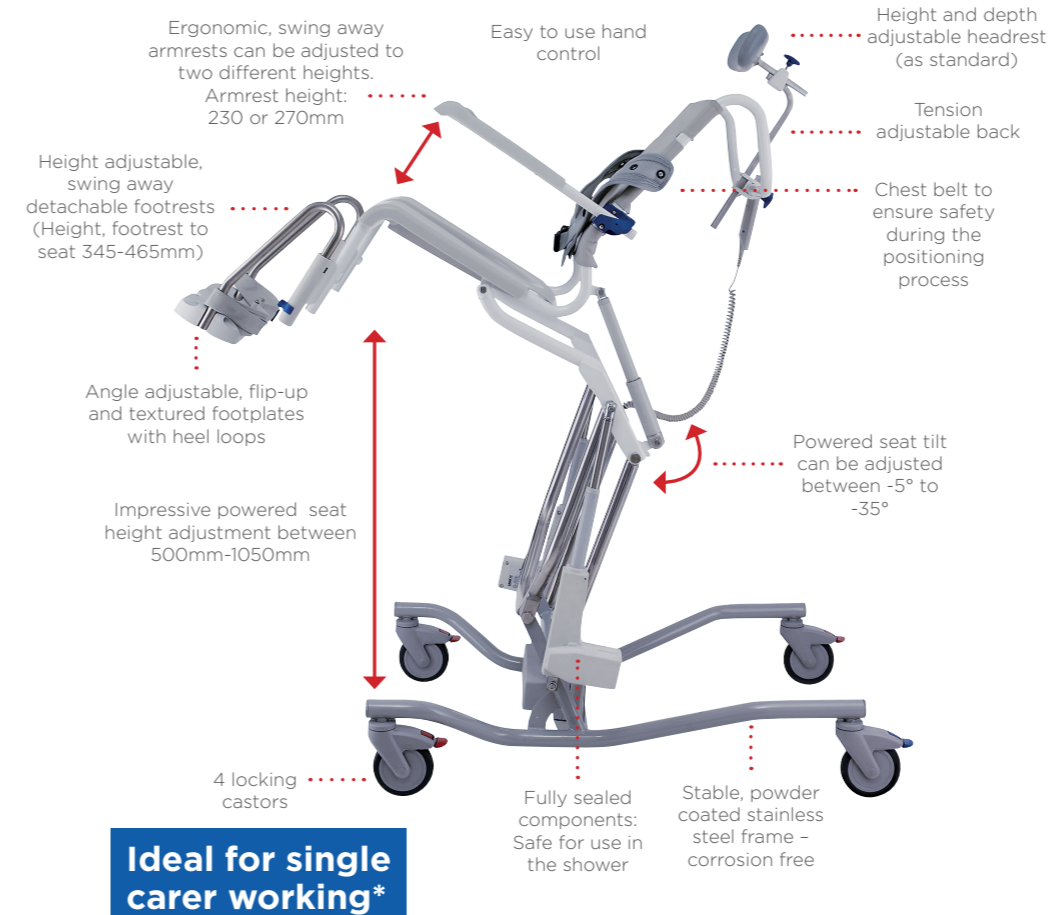


Key features

- Soft seat with insert, pan and lid as standard (not shown above)
- Extremely stable even at maximum tilt angle
- Can be retrofitted with XL armrests for additional width (user weight 150kg/23 stone)
- Maximum user weight 150kg (23 stone)
- 3 Year warranty
- See overleaf for customisation with a range of positioning accessories

* Ocean Dual VIP only

Powered positioning to protect carers and support clients' hygiene needs.



Key features

- Soft seat with insert, pan and lid as standard (not shown above)
- Extremely stable even at maximum tilt angle
- Can be retrofitted with XL armrests (user weight 150kg (23 stone)
- Maximum user weight 150kg (23 stone)
- 3 Year warranty
- See overleaf for customisation with a range of positioning accessories



Safety belts
To ensure necessary safety during the positioning process.



Safety bar
For additional safety. Client can grip bar for re-assurance.



Armrest lock
Locks armrest into upright or lowered position.



Wider XL armrests
Increase the distance between the armrests by 40mm on each side. These can be retrofitted to the Ocean VIP, Dual VIP and Ocean E-VIP.



Lateral
This support reduces the backrest width and can help position the trunk.



Calf support with footrest
Increased support helps distribute load to avoid pressure on lower limbs.



Calf and amputation support
Padded. Both height and angle adjustable.



Short Foot Rests
Can be used to support abnormal posture or smaller/young adults (12cm shorter than standard foot rests).



24" wheels (kit)
Including brakes and removable quick release axles.



Anti Tippers (Front and Rear)
Provide extra stability. (Rear supplied as standard on the Ocean Dual VIP).

Please refer to our accessory compatibility guide