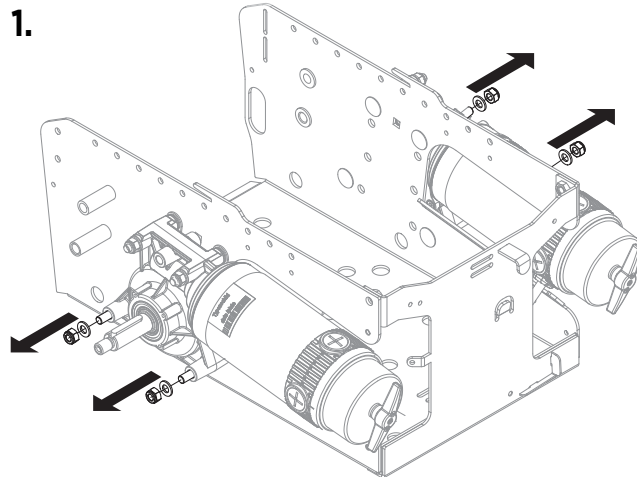


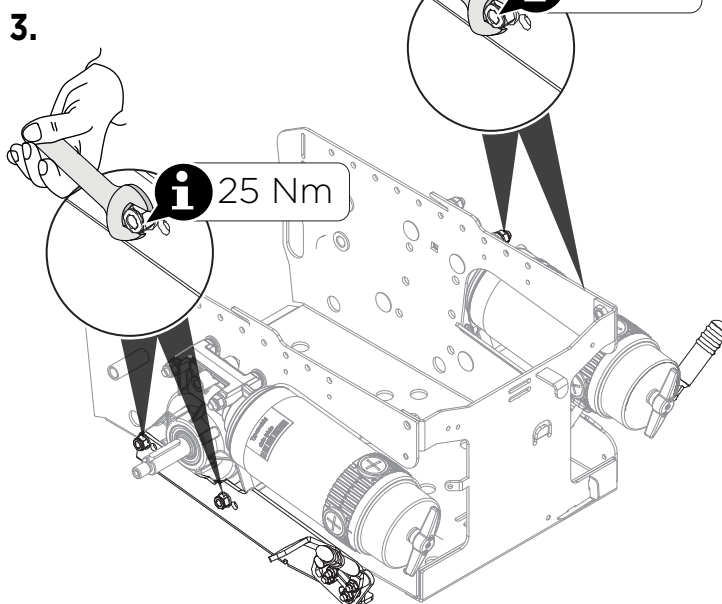
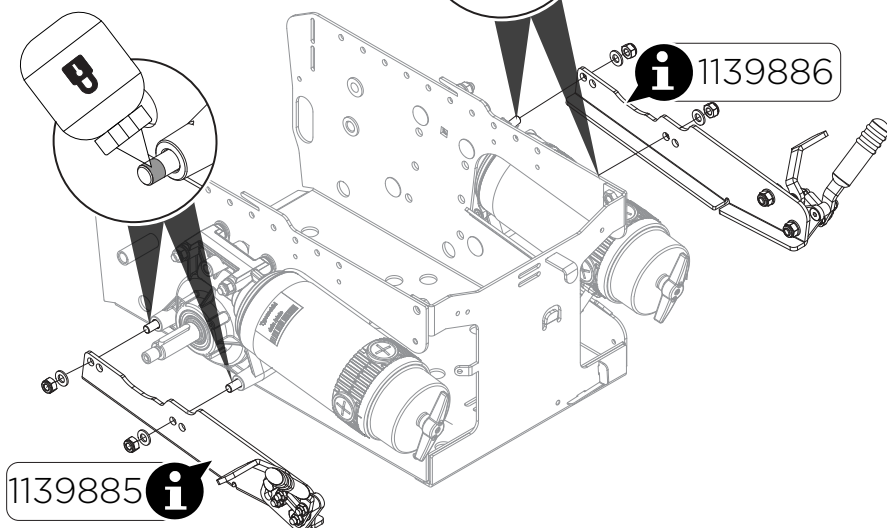
Mounting Instruction

Manual Wheel Lock

Spare part for
AVIVA™ RX Series



2. **i**
- en** Apply medium strength thread lock.
- de** Mittelstarken Schraubensicherungsack auftragen.
- fr** Appliquer un frein-filet de force moyenne.
- sv** Applicera medelstarkt gänglåsningssmedel.



Invacare GmbH
Am Achener Hof 8
88316 Isny
Germany

