

matrx[®]
SEATING SERIES

Elite TR Back



Designed for unique user needs
when in tilt/recline



The *Invacare **Matrix Elite TR*** is specially designed for use in manual or power tilt/recline applications. It includes an extra layer of SuperSoft high resilient (HR) foam for improved immersion and comfort, and full support across the shoulder area.

Features and Options



3" (7.5cm) contour depth



Headrest Adapter Plate



Lumbo Sacral Support



Offset Fixed Lateral Pads



Fixed Lateral Pads



Swing-Away



Offset Swing Away



Chest Harness Interface

Cover - Oversized cover featuring SuperSoft HR foam layered over firm HR foam for comfort and protection. Attractive Meshtex cover is water resistant and breathable.

Hardware - "Easy Set" hardware installs and adjusts in minutes - all adjustments can be made with user seated in the wheelchair. Other hardware styles may be substituted for unique mounting applications, such as Split, Fixed and Space Saver.

Back shell - Stylish, durable aluminum shell provides contoured support in shoulder area, slotted for lateral support hardware attachment.

Adjustable Lumbo-Sacral Support - Includes removable positioning pad.

Headrest Adapter - Included as standard, it allows for easy, durable and safe mounting of the headrest hardware and provides offset for clearance of foam overlap.

Technical data

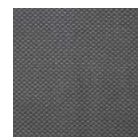
For more comprehensive pre-sales information about this product, including the product's user manual, please see your local Invacare website.

Height	Width	Depth ¹ adjustment	Angle adjustment	Total product weight	Max. user weight	Limited warranty
410, 460, 510 mm	380, 410, 460, 480, 510 mm	100 mm	40° range +/- 20°	0,8 kg and up	136 kg	2 years

1. Limitation of depth/angle adjustment if used on chairs narrower than model width

Cover options

Mesh Tex fabric



Invacare Limited
Pencoed Technology Park - Pencoed
Bridgend CF35 5AQ - United Kingdom
Tel: +44 1656 776 222
Fax: +44 1656 776 220
E-mail: uk@invacare.com
Sales Order E-mail:
ordersuk@invacare.com
www.invacare.co.uk

Invacare Ireland Ltd
Unit 5 - Seatown Business Campus
Seatown Road - SWORDS -
County Dublin - Ireland
Tel. +353 1 8107084
Fax +353 1 8107085
Email: Ireland@invacare.com
www.invacare.ie

