

# Seating & Positioning 2019



**matrix**<sup>®</sup>  
SEATING SERIES

**Flo-tech**<sup>®</sup>

**Propad**<sup>®</sup>



## Propad cushions

<i>Invacare</i> <b>Propad Low Profile</b>	5-6
<i>Invacare</i> <b>Propad Original</b>	7-8
<i>Invacare</i> <b>Propad Revolve</b>	9-12

## Matrx Flo-tech cushions

<i>Invacare</i> <b>Matrx Flo-tech Lite</b>	13-14
<i>Invacare</i> <b>Matrx Flo-tech Lite Visco</b>	15-16
<i>Invacare</i> <b>Matrx Flo-tech Contour</b>	17-18
<i>Invacare</i> <b>Matrx Flo-tech Contour Visco</b>	19-20
<i>Invacare</i> <b>Matrx Flo-tech Contour Lo-Back</b>	21-22
<i>Invacare</i> <b>Matrx Vi</b>	23-24
<i>Invacare</i> <b>Matrx Flo-tech Plus</b>	25-26
<i>Invacare</i> <b>Matrx Flo-tech Image</b>	27-28
<i>Invacare</i> <b>Matrx Flo-tech Solution</b>	29-30
<i>Invacare</i> <b>Matrx Flo-tech Solution Xtra</b>	31-34
<i>Invacare</i> <b>Matrx Libra</b>	35-38

## Matrx Seating systems

<i>Invacare</i> <b>Matrx Mini Series</b>	39-42
<i>Invacare</i> <b>Matrx Back systems</b>	43-54
<i>Invacare</i> <b>Matrx MX2</b>	55-58
<i>Invacare</i> <b>Matrx Elan</b>	59-62
<i>Invacare</i> <b>Matrx Flo-tech Back Support</b>	63-64







*Invacare*<sup>®</sup> | **Propad<sup>™</sup> Profile Cushion**

Profiled cut-foam cushion designed for comfort with  
castellations and support



The *Invacare Propad Profile cushion* provides individuals with an option of having a lower 3" high cushion, rather than a standard height (4") original cushion. Some individuals prefer a lower profile cushion, finding it more compatible with their daily living activities.

### Castellated Foam Cushion

Each castellation delivers enhanced support and pressure area care.

### Reduces shear and friction forces

The castellations in the *Invacare Propad Profile cushion* reduce shear and friction forces on tissue.



## Features and Options



### Cover helps to prevent a build up of shear and friction forces

Cover is two-way stretch, water-resistant and vapour permeable. Cover features an anti-slip base.



### Available in a range of sizes

The *Invacare Propad Profile Cushion* is available in 96 sizes, ranging from 10-24" widths and 10-22" depths.



### Full length flap conceals the zip

The full length flap concealing the zip reduces the potential for fluid ingress into the cushion and protects the foam core. The cover can be removed and laundered.

## Technical data

For more comprehensive pre-sales information about this product, including the product's user manual, please visit [www.invacare.co.uk](http://www.invacare.co.uk)

	Size range	Max. user weight	Max. cleaning temperature	Warranty	Manufactured to European Standards:
<b>Propad Profile Cushion</b>	 A range of 102 sizes	 95 kg (15 stone)	 80°	 1 year	Interior Foam: BS EN 597-1 Cig, BS EN597-2 Match, BS 5852 (Crib 5) Cover: BS 7175 (Crib 5)

## Colours

Fuscia

Black Smooth





*Invacare*<sup>®</sup> | **Propad<sup>™</sup> Original Cushion**

Cut foam with castellations for comfort and support





The *Invacare Propad Original Cushion* has been designed to facilitate good pressure redistribution when used with both wheelchairs and standard armchairs. This cushion is constructed to ensure improved support and prolonged longevity.



### Designed to deliver enhanced pressure care

The *Invacare Propad Original Cushion* is made from a layer of castellated foam, each segment delivers enhanced support and pressure area care to the individual. The “keyhole” cut at the base of each castellation ensures good air circulation, reducing potential for skin maceration.

### Seating surface

Offers improved stability and postural support; castellations reduce shear and friction forces on tissue.

## Features and Options



### Cover helps prevent a build up of shear and friction forces

Cover is two-way stretch, water-resistant and vapour-permeable. Cover features an anti-slip base.



### Available in 116 sizes

The *Invacare Propad Original Cushion* is available in 116 sizes ranging from 10-24” width and 10-22” depths (See prescription chart for details).


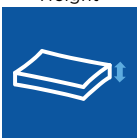






### Full length flap conceals zip

The full length flap concealing the zip reduces the potential for fluid ingress into the cushion and protects the foam core. The cover can be removed and laundered.

## Technical data

For more comprehensive pre-sales information about this product, including the product’s user manual, please visit [www.invacare.co.uk](http://www.invacare.co.uk)

	Size range	Height	Total product weight	Max. user weight	Max. cleaning temperature	Warranty	Manufactured to European Standards:
<i>Propad Original Cushion</i>	 A range of 116 sizes	 102 mm	 1 kg	 108 kg (17 stone)	 80°	 1 year	Interior Foam: BS EN 597-1 Cig, BS EN597-2 Match, BS 5852 (Crib 5) Cover: BS 7175 (Crib 5)

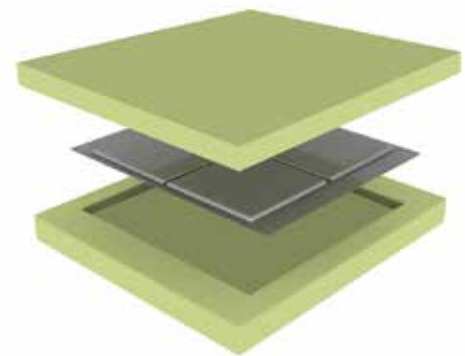
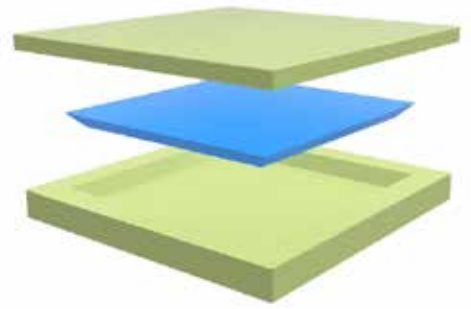
## Colours

Fuscia

Black Smooth







*Invacare*<sup>®</sup> | **Propad Revolve**

Flat, high risk cushion that can be placed in any direction



- Flat cushion
- 25 stone weight limit
- Suitable for high to very-high risk
- Visco and Silicone options
- Sewn or welded covers
- Omnidirectional



### High Resilient moulded Foam

The **Propad Revolve** cushions are manufactured from the finest quality materials. The same high resilient foam is used within the clinically respected **Matrix Flo-tech** range.



### Omnidirectional

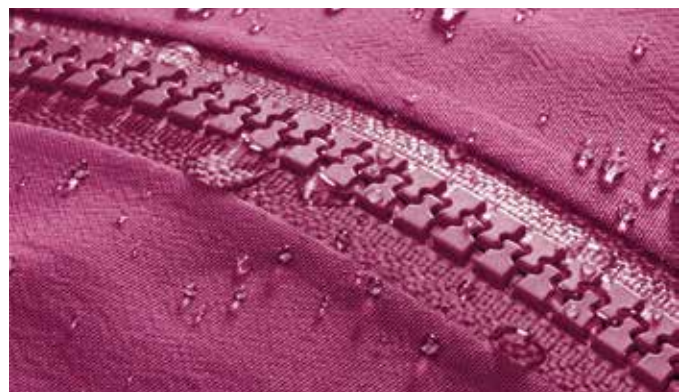
Versatile and efficient with a design that allows for omnidirectional use from the top, bottom, front or back. Offering increased flexibility and saving time on seating preparation.



### Intelligent fabric

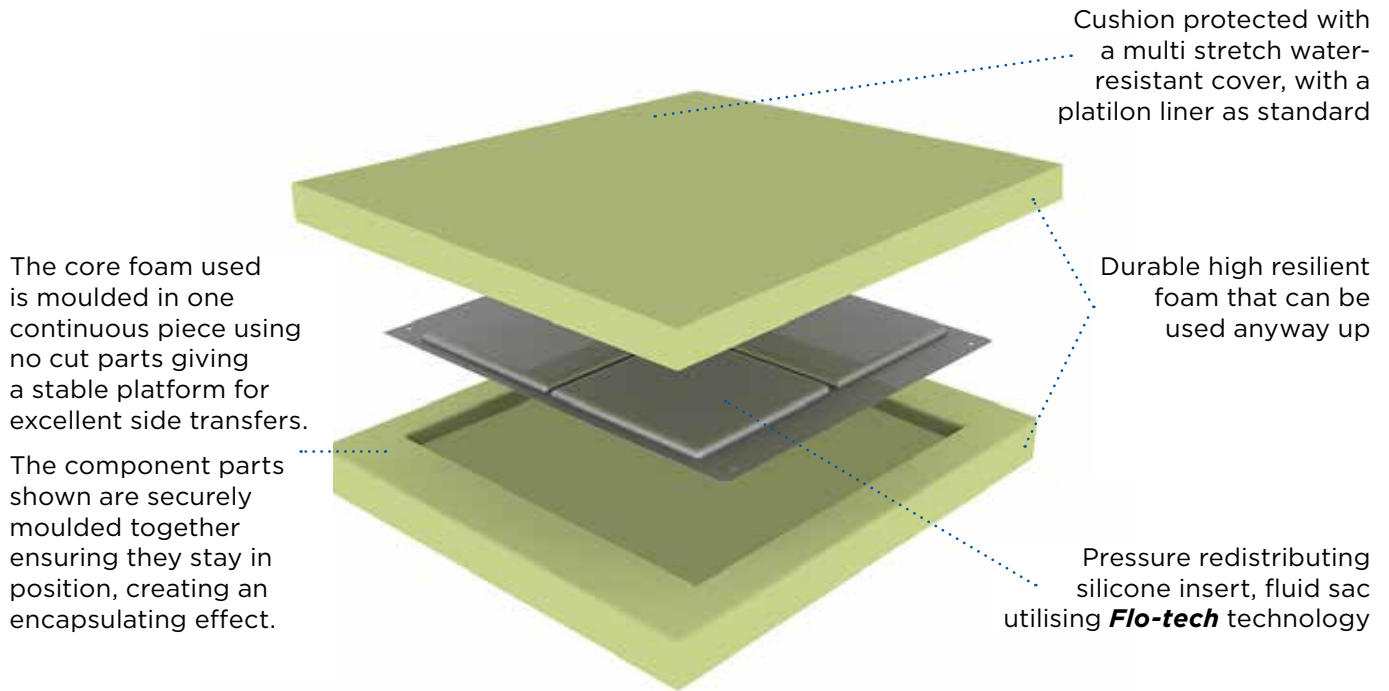
A sewn cover comes as standard which features a concealed zip and a full length flap.

Completely welded seams available as an option for maximum ingress protection.



### Aquaguard zip

An innovative new waterproof repellent zip is included with the welded seamed cover option. Unlike standard zipped covers, the superior Aquaguard withstands an extensive shower test and does not absorb moisture.

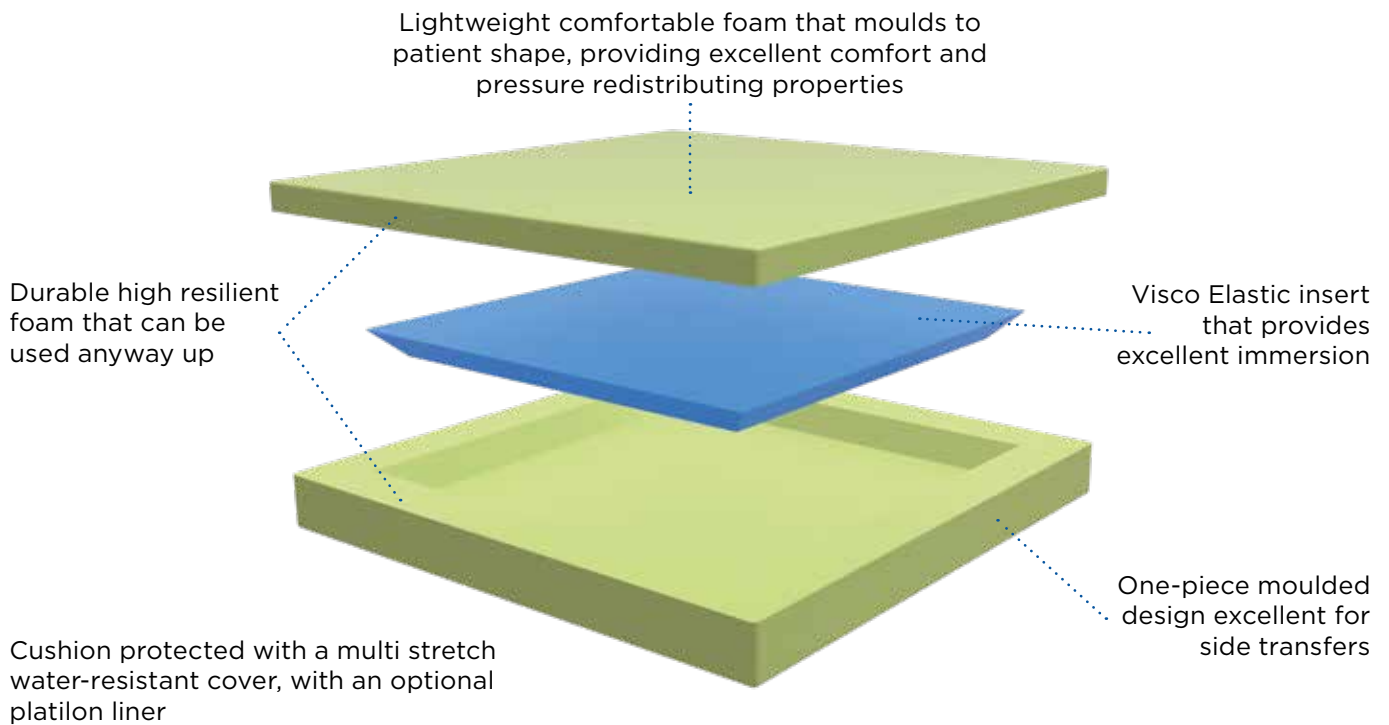


**Fluid and foam advantages**

The embedded, non-temperature sensitive silicone (Si) fluid sac envelops protruding bony prominences for superior skin protection and shear management.

**High resilient foam**

Top quality moulded HR-foam provides high-level immersion for excellent pressure redistribution. A choice between soft and firm top allows individuals to choose the type of comfort they prefer.



**Visco-elastic inner layer**

The **Propad Revolve V** combines an outer-layer of durable moulded high resilient foam with a viscoelastic foam inner layer in a lightweight package.

**Design features**

The angled base design ensures seamless transition while the visco layer provides high level immersion and pressure redistribution and stabilization.

## Technical data

For more comprehensive pre-sales information about this product, including the product's user manual, please visit [www.invacare.co.uk](http://www.invacare.co.uk)

	Height	Total product weight	Max. user weight	Max. cleaning temperature	Warranty	Materials used
<i>Propad Revolve Si</i>	3" (7.5cm)	2.75kg	30 stone (190kg) <sup>1</sup>	80°C	3 years	Foam, Fluid
<i>Propad Revolve V</i>	3" (7.5cm)	2kg	30 stone (190kg) <sup>1</sup>	80°C	3 years	Foam, Visco

1. Maximum user weight limits are set provided that the cushion selected is of appropriate width and depth for the intended user/s. The maximum weight limit applies to a 24"x20" cushion.

## Cushion Sizes

		Width									
cm		36	38	41	43	46	48	51	56	61	
inch		14	15	16	17	18	19	20	22	24	
Depth	36										
	38										
	41										
	43										
	46										
	51										

Complete your community seating system with:

### Flo-tech back support

- Provides added stability excellent comfort and improved positioning
- Adjustable straps easily fitted to a standard armchair



### Lumbar support

- Simple to use on armchairs or wheelchairs
- Constructed of two foams, Visco and HR foam
- Added support to the lower back



### Maxxcare Heel Boot

- Offload heels to relieve pressure
- Durable specialist low friction material on the exterior
- Cushioning effect around the foot for complete heel protection







*Invacare*<sup>®</sup> | **Matrix<sup>®</sup> Flo-tech<sup>™</sup> Lite**

Slimline contoured cushion affording exceptional comfort and improved posture

**matrix**<sup>®</sup>  
SEATING SERIES

**INVACARE**  
Yes, you can.

The *Invacare* **Matrx Flo-tech Lite** cushion is a slimline contoured cushion ideally suited for people at low risk of developing pressure ulcers and for comfort purposes only. The contoured seating surface offers improved stability and postural support. With sizes starting from 25 x 25 cm (10 inches), the **Matrx Flo-tech Lite** cushion is particularly suited to paediatric clients.

## Features and Options



### Ingress resistant cover

Cover is two-way stretch, water-resistant and vapour-permeable. Cover features an anti-slip base with carry handle for easy transportation.



### Available in 63 sizes

The *Invacare* **Matrx Flo-tech Lite** is available in a range of 63 sizes, from 10-20" width and 10-21" depths. (See prescription chart for details)



### Integral sag rigidizer option

Option to compensate the sag in wheelchair seats, and ensure the cushion is correctly presented.



### Ultra-fresh™ added to all cushions for antimicrobial and odour protection

Antimicrobial treatment has been added to all **Flo-tech** foam to help make it resistant to the growth of odour causing bacteria helps provide longer lasting freshness.

### Slimline foam base made from high quality resilient, moulded foam







The high quality resilient foam is manufactured using a unique formula which offers high levels of pressure redistribution and improves product longevity. Moulding allows the **Matrx Flo-tech Lite** cushion to provide a 3D form, which cannot be emulated in cut foam. The pommel at the front of the cushion ensures femurs are in a midline position for good posture and allows air to circulate.

### Contoured seating surface

Offers improved stability and postural support. Also delivers a greater degree of weight distribution compared to that of a flat surface. The castellations of the cushion allow slight movement which in turn reduces shear and friction forces.

## Technical data

For more comprehensive pre-sales information about this product, including the product's user manual, please visit [www.invacare.co.uk](http://www.invacare.co.uk)

Various sizes	Height	Total product weight	Max. user weight <sup>1</sup>	Max. cleaning temperature	Warranty	Manufactured to European Standards: BS EN 1021-1 Cig, BS EN 1021-2 Match and BS 7176 (Crib 5)
 A range of 63 sizes	 78 mm	 1.5 kg	 127 kg (20 stone)	 80°	 3 years	

1. Guide maximum user weight limits are set assuming that the cushion selected is of appropriate width and depth for the intended user/s.

## Colours

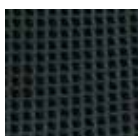
Black Smooth



Black wipedown



Black spacer fabric



Baltic Blue





*Invacare*® | **Matrix® Flo-tech™ Lite Visco**

Low profile visco elastic memory foam cushion offering exceptional comfort

**matrix**®  
SEATING SERIES

**INVACARE**  
Yes, you can.

The *Invacare **Matrx Flo-tech Lite Visco*** cushion is made of high-density visco elastic foam, allowing it to conform to the individual's shape. This affords exceptional levels of comfort and increases and redistributes pressure. This low profile cushion format is ideal for both chair and wheelchair use, facilitating side transfers.

### Low memory foam designed to maximise body contact area

The visco-elastic foam conforms to the individual's body, maximising the contact area, optimising pressure distribution and delivering exceptional levels of comfort.



## Features and Options



### Ingress resistant cover

Cover is two-way stretch, water-resistant and vapour-permeable. Cover features an anti-slip base with carry handle for easy transportation.



### Available in 64 sizes

The *Invacare **Matrx Flo-tech Lite Visco*** is available in a range of 64 sizes, from 10-20" widths and 10-21" depths. (See prescription chart for details).



### Three foam densities available

Available in three densities to accommodate a range of client weights – Soft (up to 32 kg), Medium (up to 51 kg) and Firm (up to 100 kg).

### Contoured seating surface withommel and side support

Offers mild lateral support and pelvic stability to enhance the individual's posture.

## Technical data

For more comprehensive pre-sales information about this product, including the product's user manual, please visit [www.invacare.co.uk](http://www.invacare.co.uk)

Various sizes	Height	Total product weight	Max. user weight <sup>1</sup>	Max. cleaning temperature	Warranty	Manufactured to European Standards: Interior Foam: BS EN 1021-1, BS EN 1021-2, BS 5852: 1982 Crib 5
Up to 64 sizes	78 mm	1.26 kg	Soft: 32kg (5 stone) Medium: 51kg (8 stone) Firm: 100kg (16 stone)	80°	3 years	

1. Guide maximum user weight limits are set assuming that the cushion selected is of appropriate width and depth for the intended user/s.

## Colours

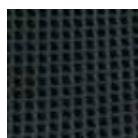
Black Smooth



Black wipedown



Black spacer fabric



Baltic Blue







*Invacare*® | **Matrix® Flo-tech™ Contour**

Contoured moulded foam for improved posture

**matrix**®  
SEATING SERIES

**INVACARE**  
Yes, you can.™

The surface of the *Invacare Matrix Flo-tech* Contour cushion is contoured into sections. Its design supports the client and increases pressure redistribution. The combination of improved posture and increased support surface area will contribute significantly to pressure ulcer prevention. This deep cushion is suitable for heavier people.

### Moulded foam cushion

Moulding allows *Matrix Flo-tech* cushions to provide a three-dimensional form, which cannot be emulated in cut foam. Moulded foam is highly durable, increasing the product's longevity.

### Contoured seating surface

Offers improved stability and postural support; castellations reduce shear and friction forces on tissue.

## Features and Options



### Ingress resistant cover

Cover is two-way stretch, water-resistant and vapour-permeable. Cover features an anti-slip base with carry handle for easy transportation.



### Available in 84 sizes

The *Invacare Matrix Flo-tech Contour* is available in a range of 84 sizes, from 14-24" width and 14-22" depths. (See size chart for details).



### Integral sag rigidizer option

Option of sag compensator to accommodate the sag in wheelchair seats, and ensure the cushion is correctly presented.



### Ultra-fresh™ added to all cushions for antimicrobial and odour protection

Antimicrobial treatment that has been added to all *Flo-tech* foam to help make it resistant to the growth of odour causing bacteria and helps provide longer lasting freshness.

## Technical data

For more comprehensive pre-sales information about this product, including the product's user manual, please visit [www.invacare.co.uk](http://www.invacare.co.uk)

	Various sizes	Height	Total product weight	Max. user weight <sup>1</sup>	Max. cleaning temperature	Warranty	
<b>Matrix Flo-tech Contour</b>							Manufactured to European Standards: BS EN 1021-1 Cig, BS EN 1021-1 Match, and BS 7176 (Crib 5)
	A range of 84 sizes	103 mm	1.38 kg	152 kg (24 stone) 191kg (30 stone) on sizes 22" width/depth and above	80°	3 years	

1. Guide maximum user weight limits are set assuming that the cushion selected is of appropriate width and depth for the intended user/s.

## Colours

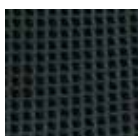
Black Smooth



Black wipedown



Black spacer fabric



Baltic Blue





*Invacare*® | **Matrix® Flo-tech™ Contour Visco**

Contoured Visco memory foam that conforms to the shape of the body

**matrix**®  
SEATING SERIES

**INVACARE**  
Yes, you can.

The *Invacare Matrix Flo-tech Contour Visco* cushion is moulded from Visco-elastic foam. Its contoured surface area conforms to the body, improving posture, increasing comfort and maximising the surface area in contact with the individual, thereby increasing pressure redistribution.

### Deep moulded low memory foam cushion

The visco-elastic foam conforms to the body. By maximising the contact area it redistributed pressure and delivers exceptional levels of comfort. The deep foam makes this cushion particularly suitable for heavier and taller people.

### Contoured seating surface with pommel and side support

Offers increased lateral support and pelvic stability to enhance posture.

## Features and Options



### Ingress resistant cover

Cover is two-way stretch, water-resistant and vapour-permeable. Cover features an anti-slip base with carry handle for easy transportation.



### Available in 58 sizes

The *Invacare Matrix Flo-tech Contour Visco* is available in a range of 58 sizes, from 14-20" widths and 13-21" depths. (See prescription chart for details).



### Four foam densities available

Available in four densities to accommodate a range of client weights - Soft (up to 51 kg), Medium (up to 76 kg), Firm (up to 108 kg) and Very Firm (up to 127 kg).

## Technical data

For more comprehensive pre-sales information about this product, including the product's user manual, please visit [www.invacare.co.uk](http://www.invacare.co.uk)

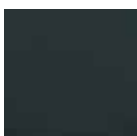
	Various sizes	Height	Total product weight	Max. user weight <sup>1</sup>	Max. cleaning temperature	
<b>Matrix Flo-tech Contour Visco</b>	Up to 58 sizes	120 mm	1.6 kg	soft: 51kg (8 stone) medium: 76kg (12 stone) firm: 108kg (17 stone) very firm: 127kg (20 stone)	80°	3 years

1. Guide maximum user weight limits are set assuming that the cushion selected is of appropriate width and depth for the intended user/s.

Manufactured to European Standards:  
Interior Foam: BS EN 1021-1, BS EN 1021-2, BS 5852: 1982 Crib 5

## Colours

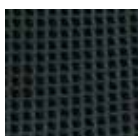
Black Smooth



Black wipedown



Black spacer fabric



Baltic Blue







Invacare® | **Matrx® Flo-tech™ Contour Lo-Back**

Allows the individual to sit back further into their seat

**matrx**<sup>®</sup>  
SEATING SERIES

**INVACARE**  
Yes, you can.

The *Invacare **Matrx Flo-tech Contour Lo-Back Cushion*** has been designed with a lower rear contour allowing the individual to sit further back into seat. The additional contouring and support under the thighs stabilises the individual further, thus reducing the damaging effects of shear.



Comparison



### Contour Lo-Back Cushion optimises support surface contact area

Comparison with standard wheelchair cushion, showing improved posture through use of the **Matrx Flo-tech Contour Lo-Back Cushion**.

**Matrx Flo-tech Contour**

**Matrx Flo-tech Contour Lo-Back**

## Features and Options



### Ingress resistant cover

Cover is two-way stretch, water-resistant and vapour-permeable. Cover features an anti-slip base with carry handle for transportation.



### Available in 79 sizes

The Invacare **Matrx Flo-tech Contour Lo-Back Cushion** is available in a range of 79 sizes, from 14-24" widths and 13-22" depths. (See size chart for details).



### Contoured seating

Offers improved stability and postural support. Castellations reduce shear and friction forces on tissue.



### Ultra-fresh™ added to all cushions for antimicrobial and odour protection

Antimicrobial treatment has been added to all **Flo-tech** foam to help make it resistant to the growth of odour causing bacteria and helps provide longer lasting freshness.

### Moulded Foam Cushion

Moulding allows **Matrx Flo-Tech** cushions to provide a three-dimensional form, which cannot be emulated in cut foam. Moulded foam is highly durable, increasing the product's longevity.

## Technical data

For more comprehensive pre-sales information about this product, including the product's user manual, please visit [www.invacare.co.uk](http://www.invacare.co.uk)

Various sizes	Height	Total product weight	Max. user weight <sup>1</sup>	Max. cleaning temperature	Warranty
A range of 79 sizes	103 mm	1.38 kg	152 kg (24 stone)	80°	3 years

Manufactured to European Standards: BS EN 1021-1 Cig, BS EN 1021-2 Match and BS 7176 (Crib 5)

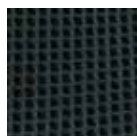
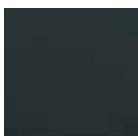
1. Guide maximum user weight limits are set assuming that the cushion selected is of appropriate width and depth for the intended user/s.

## Colours

Black Smooth

Black wipedown

Black spacer fabric





*Invacare*<sup>®</sup> | **Matrix<sup>®</sup> Vi**

Moulded foam with visco insert for protection and positioning

**matrix**<sup>®</sup>  
SEATING SERIES

**INVACARE**  
Yes, you can.

The *Invacare Matrix Vi Cushion* is designed to provide skin protection and positioning for individuals at moderate to high risk of skin breakdown. The unique three part foam construction targets skin protection where it is needed most, and features excellent stability, support and comfort.



#### ① Outer cover

Moisture resistant and breathable. Includes slip resistant base, hook and loop fasteners, lifting strap.

#### ② Inner cover

Moisture resistant. Easily wipes clean. Zippered cover allows access for cushion modifications.

#### ③ Top layer

Soft (ILD) High Resilient (HR) foam for optimal comfort and support. Pre-ischial contour provides stability to pelvis. Abductor/adductor contour promotes midline leg positioning.

Made with Ultra-Fresh™ for antibacterial and odour protection.

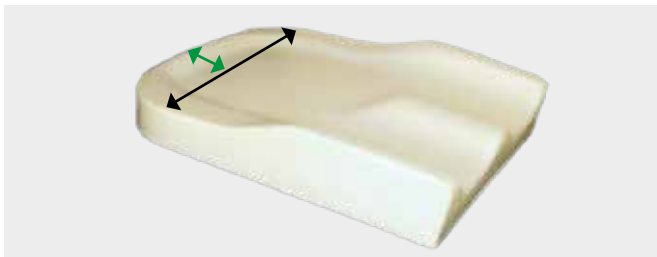
#### ④ Visco foam insert

Moulded visco-elastic foam ischial relief insert. Anatomically targeted to ischial/sacral area. Provides immersion to sensitive bony prominences.

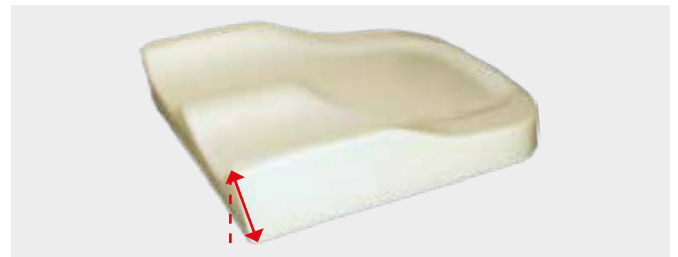
#### ⑤ Bottom layer

Firm High Resilient (HR) foam for support and durability. Trochanteric shelf provides stability to hips. Waterfall front edge. Rear radius for sacral support.

## Features and Options



**Rear cushion radius:** +3.8 cm extra depth is designed to fill the gap between the seat and backrest/upholstery. **1.25 cm decrease in total width** allows cushion to fit both stated size and seats that are 2.5 cm narrower.



#### Waterfall front end

A diagonal cut along the front accommodates tight hamstrings, facilitates foot propulsion and standing transfers.

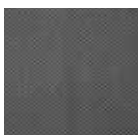
## Technical data

For more comprehensive pre-sales information about this product, including the product's user manual, please visit [www.invacare.co.uk](http://www.invacare.co.uk)

	Width	Depth	Height at adductor/abductor	Height at leg trough	Total product weight	Max. user weight	Warranty
KA-Vi	31 - 36 cm	31 - 36 cm	7,3 / 7 cm	5 cm	0,7 kg and up	68 kg (11 stone)	2 years
MA(WWDD)-Vi (Standard)	36, 41, 43, 46, 51, 53, 56 cm	38 - 51 cm	9,5 / 8,25 cm	6,35 cm	0,9 kg and up	136 kg (21 stone)	2 years

## Colours and options

Black Meshtex Kid\*ab\*ra fabric (Standard) Pelvic Obliquity Kit



Easily installed on all Invacare *Matrix Vi Kid\*ab\*ra-Vi* cushions. Accommodates up to 25 mm obliquities







Invacare®

# Matrix® Flo-tech™ Plus

Deep contoured large cushion with fluid sac

**matrix**  
SEATING SERIES

**INVACARE**  
Yes, you can.



The *Invacare* **Matrix Flo-tech Plus** cushion incorporates a fluid sac integrated in the cushion seat well. The positioning of the fluid sac targets the ischial tuberosities, helping to significantly reduce pressure in this vulnerable area. This delivers superior levels of protection for those patients identified as being at High Risk of developing pressure ulcers.

## Features and Options



### Ingress resistant cover

Cover is two-way stretch, water-resistant and vapour-permeable. Cover features an anti-slip base with carry handle.



### Available in 77 sizes

The *Invacare* **Matrix Flo-tech Plus** is available in a range of 77 sizes, from 14-24" widths and 13-22" depths. (See prescription chart for details).



### Integral sag compensator option

Option to compensate the sag in wheelchair seats, to ensure the cushion is correctly presented.



### Ultra-fresh™ added to all cushions for antimicrobial and odour protection

Antimicrobial treatment has been added to all **Flo-tech** foam to help make it resistant to the growth of odour causing bacteria. Helps provide longer lasting freshness.

### Contoured seating surface

Offers improved stability and postural support. Also delivers a greater degree of pressure distribution compared to that of a flat surface. The castellations of the cushion allow slight movement which in turn reduces shear and friction forces. The deeper moulded foam offers greater protection to those who are considered clinically obese, or individuals who would benefit from a higher sitting position.

## Technical data

For more comprehensive pre-sales information about this product, including the product's user manual, please visit [www.invacare.co.uk](http://www.invacare.co.uk)

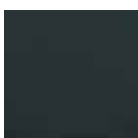
	Various sizes	Height	Total product weight	Max. user weight <sup>1</sup>	Max. cleaning temperature	Warranty
<b>Matrix Flo-tech Plus</b>	 A range of 77 sizes	 103 mm	 2.5 kg	 152 kg (24 stone) 191kg (30 stone) for sizes 22" width/depth and above	 80°	 3 years

Manufactured to European Standards:  
BS EN 1021-1 Cig, BS EN 1021-2 Match  
and BS 7176 (Crib 5)

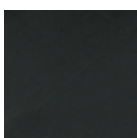
1. Guide maximum user weight limits are set assuming that the cushion selected is of appropriate width and depth for the intended user/s.

## Colours

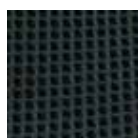
Black Smooth



Black wipedown



Black spacer fabric



Baltic Blue





*Invacare*<sup>®</sup> | **Matrix<sup>®</sup> Flo-tech<sup>™</sup> Image**

Slimline moulded foam cushion with fluid sac

**matrix**<sup>®</sup>  
SEATING SERIES

**INVACARE**  
Yes, you can.

The *Invacare Matrix Flo-tech Image* cushion uses a combination of a slim, shaped foam cushion base and a fluid sac covering the sacral area, increasing pressure distribution and immersion of the ischial tuberosities. This design delivers a high degree of protection for people who are at High Risk of developing pressure ulcers. This slim cushion format is ideal for both chair and wheelchair use.

## Features and Options



### Ingress resistant cover

Cover is two-way stretch, water-resistant and vapour-permeable. Cover features an anti-slip base with carry handle for easy transportation.



### Available in 50 sizes

The *Invacare Matrix Flo-tech Image* is available in a range of 50 sizes, from 14-20" width and 13-21" depths. (See prescription chart for details).



### Integral sag compensator option

Option to compensate the sag in wheelchair seats, and ensure the cushion is correctly presented.



### Ultra-fresh™ added to all cushions for antimicrobial and odour protection

Antimicrobial treatment has been added to all **Flo-tech** foam to help make it resistant to the growth of odour causing bacteria and helps provide longer lasting freshness.

### Slimline contoured foam and gel combination cushion







Some individuals prefer a slimline cushion, finding it more convenient with their daily living activities. The *Invacare Matrix Flo-tech Image* combines the benefit of a contoured foam upper surface with a large fluid sac covering the ischial and sacral area, offering increased support and reducing the peak pressures.

### Contoured seating surface with gel sac

Offers improved stability and postural support; moulded foam castellations and fluid combine effectively to reduce shear and friction forces on tissue.

## Technical data

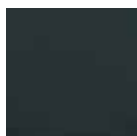
For more comprehensive pre-sales information about this product, including the product's user manual, please visit [www.invacare.co.uk](http://www.invacare.co.uk)

Various sizes	Height	Total product weight	Max. user weight <sup>1</sup>	Max. cleaning temperature	Warranty	Manufactured to European Standards: BS EN 1021-1 Cig, BS EN 1021-2 Match and BS 7176 (Crib 5)
 A range of 50 sizes	 78 mm	 1.82 kg	 140 kg (22 stone)	 80°	 3 years	

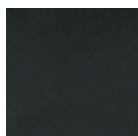
1. Guide maximum user weight limits are set assuming that the cushion selected is of appropriate width and depth for the intended user/s.

## Colours

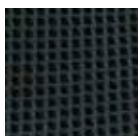
Black Smooth



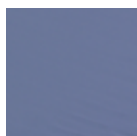
Black wipedown



Black spacer fabric



Baltic Blue





*Invacare*® | **Matrix® Flo-tech™ Solution**

Slimline cushion with unique dual fluid sac system

**matrix**®  
SEATING SERIES

**INVACARE**  
Yes, you can.™

The *Invacare **Matrx Flo-tech Solution*** cushion uses a combination of a slim, shaped foam cushion base and a dual layer of fluid sacs over the ischial and sacral area. The dual fluid sacs and the unique moulded foam shape of the solution increase the support surface area. This delivers a superior level of protection for patients identified as being at Very High Risk of developing pressure ulcers, or for those with already established tissue damage.

## Features and Options



### Ingress resistant cover

Cover is two-way stretch, water-resistant and vapour-permeable. Cover features an anti-slip base with carry handle for easy transportation.



### Available in 80 sizes

The *Invacare **Matrx Flo-tech Solution*** is available in a range of 80 sizes, from 14-24" widths and 13-22" depths. (See prescription chart for details).



### *Invacare **Matrx Flo-tech Deep Solution** option*

Option of a 10 cm (4") "Deep" foam base is also available in 12 sizes. (See prescription chart for details).



### Ultra-fresh™ added to all cushions for antimicrobial and odour protection

Antimicrobial treatment has been added to all **Flo-tech** foam to help make it resistant to the growth of odour causing bacteria. Helps provide longer lasting freshness.

### Slimline contoured foam base with large dual fluid sac covering the entire top surface of the cushion

The contact area between the individual and the foam cushion is protected, as the fluid displaces to redistribute pressure away from bony prominences. The additional layer of fluid is incorporated under the ischial and sacral area to further enhance the pressure reducing qualities of this cushion, making this cushion suitable for those at very high risk.

### Slimline contoured cushion

Some individuals prefer a slimline cushion, finding it more convenient with their daily living activities. The low profile is particularly beneficial for the facilitation of side transfers.

## Technical data

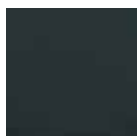
For more comprehensive pre-sales information about this product, including the product's user manual, please visit [www.invacare.co.uk](http://www.invacare.co.uk)

	Various sizes	Height	Total product weight	Max. user weight <sup>1</sup>	Max. cleaning temperature	Warranty	
							Manufactured to European Standards: BS EN 1021-1 Cig, BS EN 1021-2 Match and BS 7176 (Crib 5)
<b>Matrx Flo-tech Solution</b>	A range of 80 sizes	78 mm	3.08 kg	140 kg	80°	3 years	

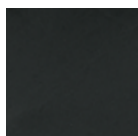
1. Guide maximum user weight limits are set assuming that the cushion selected is of appropriate width and depth for the intended user/s.

## Colours

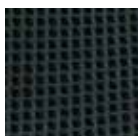
Black Smooth



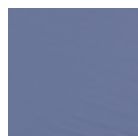
Black wipedown



Black spacer fabric



Baltic Blue







Invacare® | **Matrix® Flo-tech™ Solution Xtra™**

High risk cushion & modular positioning system

**matrix**  
SEATING SERIES

**INVACARE**  
Yes, you can.™



Combines excellent pressure-reducing properties with the promotion of active correction and management of posture.

The *Invacare Matrix Flo-tech Solution Xtra Cushion and Modular System* has been developed alongside clinicians to address complex seating needs.

Through using this **modular system**, therapeutic interventions can be more effectively addressed with regards to postural maintenance by enhancing function, maximizing comfort and preserving skin integrity.

### Helps correct and manage posture

The modular components are manufactured from high-density resilient foam, to achieve active correction and posture management. The wedges feature witness marks and hook and loop fixings, enabling them to be cut to meet the needs of the individual. The application of wedges beneath the cushion combined with the deployment of modular components on the top surface deliver a highly versatile range of options for therapists seeking to achieve specific postural management interventions.



### Large dual fluid sac covering the entire top surface of the cushion

The first layer of fluid re-distributes pressure away from bony prominences so that the contact area between the person and the foam cushion is protected, The additional layer of fluid is incorporated under the ischial and sacral area to further enhance the pressure-reducing qualities of this cushion, making it suitable for those at a Very High Risk of developing pressure ulcers.

### Cover Design

The cover is manufactured with an ingress-resistant material, which inhibits fluids from absorbing into the fabric. In addition, the cover expands to allow components to be added. The cover features two zips with colour coded sliders: blue to open and green to expand. It can also be opened either from the top or the bottom to adjust the components as necessary.



### **Pelvic obliquity pad**

The pelvic obliquity pad can be inserted into either side of the ischial well under the gel pad to help correct fixed pelvic obliquities.



### **Hip aligner**

The hip aligner can be placed on either side on the rear edge of the cushion, secured by the hook and loop fastener, and used either unilaterally or bilaterally to encourage mid-lining and hip alignment.



### **Thigh aligner**

The thigh aligner can be placed on either side at the front of the femoral shelf and used either unilaterally or bilaterally to reduce external rotation and abduction of the thighs.



### **Pommel - standard or deep**

The pommel can be placed on the front of the cushion to increase the existing pommel height helping femoral alignment, maintaining hip joints and can assist with spasticity.



### **Rigidisers**

The Rigidiser is to be placed under the whole cushion (including wedges). This maintains a firm base on slung canvases to maximise effect of component parts.



### **Fluid sac**

A Fluid Pack can be inserted into the ischial well where required, and can be doubled for specific placing. Specific placement will help prevent forward sliding, assist with sacral pressure and help mild pelvic obliquity.



### **Front Wedge**

Front Wedge is to be placed on the underneath of the cushion base and will need to be trimmed to size. It can assist with pelvic stability and accommodates posterior tilt whilst reducing anterior tilt.



### **Side (tapered) Wedges**

Side wedges can be placed on any corner of the cushion base. Can help assist lateral hip rotation and thigh alignment or even used under one thigh for mild hip flexion discrepancies and reducing milder postural positioning.

## Features and options



### Lateral Wedges





Lateral Wedges are to be trimmed to the size of the cushion and placed underneath to help facilitate lateral pelvic and hip stability while encouraging more contoured positioning.

### Ultra-fresh™ added to all cushions for antimicrobial and odour protection

Antimicrobial treatment has been added to all **Flo-tech** foam to help make it resistant to the growth of odour causing bacteria and helps provide longer lasting freshness.

## Technical data

For more comprehensive pre-sales information about this product, including the product's user manual, please visit [www.invacare.co.uk](http://www.invacare.co.uk)

Size range	Height	Total product weight	Max. user weight <sup>1</sup>	Max. cleaning temperature	Warranty
 80	 78 mm	 3.08 kg	 140 kg (22 stone)	 80°	 3 years

Matrix  
Flo-tech Xtra



Bariatric use

1. Guide maximum user weight limits are set assuming that the cushion selected is of appropriate width and depth for the intended user/s.


Manufactured to European Standards:  
BS EN 1021-1 Cig, BS EN 1021-2 Match  
and BS 7176 (Crib 5)

## Colours

Black smooth

Black spacer  
fabric



 Please notice colours may vary slightly from those displayed above.





Invacare®

# Matrix® Libra®

Superior function with the highest level of protection and positioning

**matrix**  
SEATING SERIES

**INVACARE**  
Yes, you can.



With a perfect balance of immersion, off-loading and envelopment, the *Invacare Matrix Libra* cushion delivers the highest level of skin protection and positioning. The moulded foam base effectively redistributes forces to the hips and thighs, providing stability to optimise function. The unique dual layer fluid sac provides complete envelopment of bony prominences. Lightweight, low profile, and maintenance free, the **Libra** complements a variety of manual and power mobility bases. A full range of positioning accessories is available for extra support and targeted positioning.



**Unique design**

- Combination of foam and fluid for highest level of skin protection, positioning and adjustability for individual needs
- New dual layer fluid sac with *Invacare's Flo-tech™* technology envelops bony prominences and reduces shear using non-temperature sensitive fluid for worry-free, reliable protection
- Highly durable HR-moulded foam base: innovative design increases immersion and balances posture



**Functional benefits**

- Improves pelvic stability from all sides, optimising function
- Suitable for individuals at very high risk for skin breakdown
- Lightweight, low-profile, and maintenance free, **Libra** complements an active lifestyle
- Recommended for all individuals including those with specific seating needs

**Features and options**



**Immersion**

Maximises surface contact area in order to reduce peak pressures. Pressure = Force/Area.



**Off-Loading**

Transfers forces away from the ischial tuberosities with greater weight bearing on the trochanters, hips and thighs.



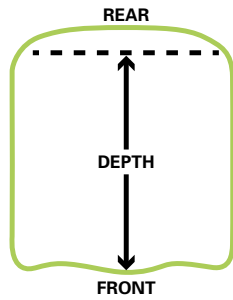
**Envelopment**

Fluid sac completely surrounds the bony prominences, even during position changes.



**Pelvic Stability**

Contouring of the pelvic well provides lateral trochanteric support and anterior/posterior pelvic stability, promoting spinal extension for improved upper extremity function, head control and physiological function.



**Waterfall cut**

For tight hamstrings, easier transfers and foot propulsion.

**Cushion size**

Actual seat depth is 380 mm longer when measured along the middle, due to the rear cushion radius.

**Rear cushion radius**

A 380 mm curved extension for maximum surface area minimizes gap between seat and backrest. Stabilizes fluid in tilted positions, with coccyx cut out for added relief.



**Anterior wedge**

Increases slope, prevents sliding and reduces shear.

**Trimmed anterior wedge**

For hip flexion limitations and/or lower seat height for foot propulsion.



**Tapered wedge**

For enhanced adductor support.

**Tapered wedge**

For obliquity and pelvic rotation when used in rear.



**Lateral wedge**

Reinforces lateral stability for enhanced midline positioning.

**Fluid supplement sac**

For targeted protection/obliquity accommodation. Fits securely inside main sac and pelvic well.

**Abductor**

For comfortable mid-line positioning of thighs and hips.

**Side pocket for convenient storage**

Includes quad pull cord.





## Available sizes

Width (mm)	Depth (mm)
355 / 14"	305 / 12"
355 / 14"	355 / 14"
355 / 14"	405 / 16"
380 / 15"	405 / 16"
380 / 15"	430 / 17"
380 / 15"	455 / 18"
380 / 15"	505 / 20"
405 / 16"	405 / 16"
405 / 16"	430 / 17"
405 / 16"	455 / 18"
405 / 16"	505 / 20"
430 / 17"	405 / 16"
430 / 17"	430 / 17"
430 / 17"	455 / 18"
430 / 17"	505 / 20"
455 / 18"	405 / 16"
455 / 18"	430 / 17"
455 / 18"	455 / 18"
455 / 18"	505 / 20"

Width (mm)	Depth (mm)
480 / 19"	405 / 16"
480 / 19"	430 / 17"
480 / 19"	455 / 18"
480 / 19"	505 / 20"
505 / 20"	405 / 16"
505 / 20"	430 / 17"
505 / 20"	455 / 18"
505 / 20"	505 / 20"
530 / 21"	430 / 17"
530 / 21"	455 / 18"
530 / 21"	505 / 20"
530 / 21"	560 / 22"
560 / 22"	430 / 17"
560 / 22"	455 / 18"
560 / 22"	505 / 20"
560 / 22"	560 / 22"

## Technical data

For more comprehensive pre-sales information about this product, including the product's user manual, please visit [www.invacare.co.uk](http://www.invacare.co.uk)

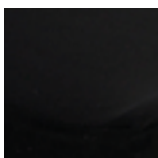
Total product weight	Max. user weight	Max. cleaning temperature	Surface cleaning
			
1.6 kg	Std 136 kg HD 227kg	Outer cover: 80°	Inner liner: With damp cloth

**Matrx Libra**



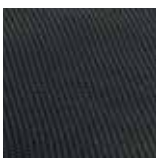
## Cover options

Black smooth



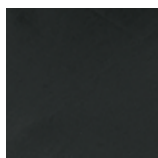
Water resistant  
Vapour permeable

Spacer



Vapour permeable

Black wipedown



Water resistant  
Vapour permeable

Please notice colors may vary slightly from those displayed above.





*Invacare*<sup>®</sup> | **Matrix<sup>®</sup> Mini Seating Series**

Transforming kids seating

**matrix**<sup>®</sup>  
SEATING SERIES

**INVACARE**  
Yes, you can.

The *Invacare **Matrx Mini Back*** and *Mini **PS Cushions*** are designed to provide exceptional support with maximum freedom of movement. Every element of the Mini Series has been carefully designed and constructed, keeping paediatrics at the forefront at every stage. Key features include:

- Lightweight, contoured and durable backrest
- Highly resilient contoured foam cushion
- Highly-adjustable *Matrx Mini Elan* headrest



### Lightweight, contoured and durable backrest

The *Invacare **Matrx Mini Back*** provides comfort, stability and improved positioning. Its Mini Set hardware can be installed and adjusted in minutes while its quick release mechanism makes the lightweight backrest highly portable.

The *Invacare **Matrx Mini Back*** offers the possibility to adjust for growth and the adjustable mounting pins allow it to fit to chairs with the same or 25 mm wider back.



### Highly resilient contoured foam cushion

The *Invacare **Matrx Mini PS*** is an anatomically contoured, high quality foam cushion with a waffled ischial relief section for improved positioning and comfort. The moulded foam provides a three-dimensional form and offers improved stability and support to the individual. Moulded foam is also highly durable, increasing the product's longevity.







**Cover**

Back - Water resistant and breathable with attractive Kid\*ab\*ra print.

Cushion - Complete with zippered Startex inner cover and Kid\*ab\*ra print outer cover. It is easy to remove to allow modifications/laundrying.

**Mini Set Back Hardware**

Allows 100 mm of depth adjustment to accommodate growth and can recline up to 30° and rotate. The hardware fits 25 mm, 22 mm & 19 mm diameter back canes.

**Mini Swing-away Laterals**

Height, width and depth adjustable lateral support for added stability and positioning. Latch release mechanism allows pads to be rotated out of the way for side transfers. Pad size W110 mm x H82 mm.



**Headrest Clamp**

Mini backs are pre-drilled to allow easy attachment of headrests.



**Mini Elan Headrest**

Elan hardware is infinitely adjustable through 6 adjustment points with a full range of Elan positioning pads - see the Elan headrest brochure for further details.



**Chest Harness Interface Kit**

Allows attachment of chest support straps to mini backs.

## Cover options

### Kid\*ab\*ra print



Startex inner cover with funky print on outer cover

## Technical data

For more comprehensive pre-sales information about this product, including the product's user manual, please visit [www.invacare.co.uk](http://www.invacare.co.uk)

	Height	Width	Contour depth	Depth adjustment	Angle adjustment	Total product weight	Max. user weight
<b>Back</b>	180, 260, 310, 360 mm	260, 280, 310, 330, 360 mm	80 mm	100 mm	30° range +/- 15°	400 g and up	68 kg
<b>Cushion</b>		260, 280, 310, 330, 360 mm	Depth	Height	Total product weight	Max. user weight	
		260, 280, 310, 330, 360 mm	360, 410 mm	50 mm	150 g and up	68 kg (10.7 stone)	

## Cushion size availability table

### Width (mm) x Depth (mm)

260 x 260 mm / 10 x 10"  
 260 x 310 mm / 10 x 12"  
 260 x 360 mm / 10 x 14"

280 x 310 mm / 11 x 12"  
 280 x 360 mm / 10 x 14"  
 280 x 410 mm / 11 x 16"

310 x 310 mm / 12 x 12"  
 310 x 360 mm / 12 x 14"  
 310 x 410 mm / 12 x 16"

### Width (mm) x Depth (mm)

330 x 310 mm / 13 x 12"  
 330 x 360 mm / 13 x 14"  
 330 x 410 mm / 13 x 16"

360 x 310 mm / 14 x 12"  
 360 x 360 mm / 14 x 14"  
 360 x 410 mm / 14 x 16"



**matrix**  
 SEATING SERIES



Invacare®

# Matrix® Seating Series

Yes, you can... and it's never been easier!

**matrix**  
SEATING SERIES

**INVACARE**  
Yes, you can.

Invacare Matrx backs are easy to interchange, install and adjust. Combined with a wide range of contoured seat cushions, the Matrx Seating Series provides you with a complete seating solution which is highly effective in meeting the widest range of individual needs.

Invacare **Matrx® Elite Back**



**Outer cover:**

- Oversized cover/foam for extra comfort and protection
- Moisture resistant and breathable
- Replacement covers available

**Hardware (ordered separately):**

- Hardware installed and adjusted in minutes – adjustments can be made while the individual is seated in the wheelchair
- Easy Set (quick release), Split or Fixed mounting hardware available
- Refer to Hardware page 8

**Back shell:**

- Stylish and breathable back shell
- Lightweight - most models under 1.36 kg

**Sacral/lumbar support:**

- Includes removable lumbar positioning pad

The *Invacare Matrx Elite Back* is designed to provide precise orientation within the wheelchair for optimal postural support. The attractive, lightweight design can appeal to individuals with active lifestyles.

**8 cm Contour Depth**



**Sacral/  
lumbar  
support**

Elite sizes	
Width	31 cm/12"
	36 cm/14"
	41 cm/16"
	43 cm/17"
	46 cm/18"
Height	51 cm/20"
	26 cm/10"
	31 cm/12"
	36 cm/14"
	41 cm/16"
Weight Capacity	46 cm/18"
	51 cm/20"
	136 kg
	(21.4 stone)

\* Optional Full Back style - no scapular cut-outs

Product Code	Width	Height	Fits Wheelchair Width
PBE1620FBNH	41 cm	51 cm	41-43 cm
PBE1720FBNH	43 cm	51 cm	43-46 cm
PBE1820FBNH	46 cm	51 cm	46-48 cm
PBE1920FBNH	48 cm	51 cm	48-51 cm
PBE2020FBNH	51 cm	51 cm	51-53 cm

Product Code	Width	Height	Fits Wheelchair Width
PBE1316NH	33 cm/13"	41 cm/16"	33-36 cm
PBE1318NH	33 cm/13"	46 cm/18"	33-36 cm
PBE1410NH	36 cm/14"	26 cm/10"	36-38 cm
PBE1412NH	36 cm/14"	31 cm/12"	36-38 cm
PBE1414NH	36 cm/14"	36 cm/14"	36-38 cm
PBE1416NH	36 cm/14"	41 cm/16"	36-38 cm
PBE1418NH	36 cm/14"	46 cm/18"	36-38 cm
PBE1420NH	36 cm/14"	51 cm/20"	36-38 cm
PBE1510NH	38 cm/15"	26 cm/10"	38-41 cm
PBE1512NH	38 cm/15"	31 cm/12"	38-41 cm
PBE1514NH	38 cm/15"	36 cm/14"	38-41 cm
PBE1516NH	38 cm/15"	41 cm/16"	38-41 cm
PBE1520NH	38 cm/15"	51 cm/20"	38-41 cm
PBE1610NH	41 cm/16"	26 cm/10"	41-43 cm
PBE1612NH	41 cm/16"	31 cm/12"	41-43 cm
PBE1616NH	41 cm/16"	41 cm/16"	41-43 cm
PBE1618NH	41 cm/16"	46 cm/18"	41-43 cm
PBE1620NH*	41 cm/16"	51 cm/20"	41-43 cm

Product Code	Width	Height	Fits Wheelchair Width
PBE1710NH	43 cm/17"	26 cm/10"	43-46 cm
PBE1712NH	43 cm/17"	31 cm/12"	43-46 cm
PBE1716NH	43 cm/17"	41 cm/16"	43-46 cm
PBE1718NH	43 cm/17"	46 cm/18"	43-46 cm
PBE1720NH*	43 cm/17"	51 cm/20"	43-46 cm
PBE1810NH	46 cm/18"	26 cm/10"	46-48 cm
PBE1812NH	46 cm/18"	31 cm/12"	46-48 cm
PBE1816NH	46 cm/18"	41 cm/16"	46-48 cm
PBE1818NH	46 cm/18"	46 cm/18"	46-48 cm
PBE1820NH*	46 cm/18"	51 cm/20"	46-48 cm
PBE1910NH	48 cm/19"	26 cm/10"	48-51 cm
PBE1912NH	48 cm/19"	31 cm/12"	48-51 cm
PBE1916NH	48 cm/19"	41 cm/16"	48-51 cm
PBE1918NH	48 cm/19"	46 cm/18"	48-51 cm
PBE1920NH*	48 cm/19"	51 cm/20"	48-51 cm
PBE2010NH	51 cm/20"	26 cm/10"	51-53 cm
PBE2012NH	51 cm/20"	31 cm/12"	51-53 cm
PBE2016NH	51 cm/20"	41 cm/16"	51-53 cm
PBE2018NH	51 cm/20"	46 cm/18"	51-53 cm
PBE2020NH*	51 cm/20"	51 cm/20"	51-53 cm



**Outer cover:**

- Oversized cover/foam for extra comfort and protection
- Moisture resistant and breathable
- Replacement covers available

**Hardware (ordered separately):**

- Hardware installed and adjusted in minutes - adjustments can be made while individual is seated in the wheelchair
- Easy Set (quick release), Split or Fixed mounting hardware available
- Refer to Hardware page 8

**Back shell:**

- Stylish and breathable back shell
- Lightweight - most models under 1.81 kg

**Sacral/lumbar support:**

- Includes removable lumbar positioning pad

The *Invacare Matrix Elite Deep back* is contoured to provide lateral trunk support and increased midline guidance while the slimline design features scapular cut outs, allowing clearance of the shoulders and hips to enable functionality.

**16 cm Contour Depth**



**Sacral/lumbar support**

Elite Deep sizes	
Width	36 cm/14"
	41 cm/16"
	43 cm/17"
	46 cm/18"
	51 cm/20"
Height	31 cm/12"
	41 cm/16"
	46 cm/18"
	51 cm/20"
Weight capacity	136 kg (21.4 stone)

Product Code	Width	Height	Fits Wheelchair Width
EDB1412NH	36 cm	31 cm	36-38 cm
EDB1416NH	36 cm	41 cm	36-38 cm
EDB1418NH	36 cm	46 cm	36-38 cm
EDB1420NH	36 cm	51 cm	36-38 cm
EDB1512NH	38 cm	31 cm	38-41 cm
EDB1516NH	38 cm	41 cm	38-41 cm
EDB1518NH	38 cm	46 cm	38-41 cm
EDB1520NH	38 cm	51 cm	38-41 cm
EDB1612NH	41 cm	31 cm	41-43 cm
EDB1616NH	41 cm	41 cm	41-43 cm
EDB1618NH	41 cm	46 cm	41-43 cm
EDB1620NH	41 cm	51 cm	41-43 cm
EDB1712NH	43 cm	31 cm	43-46 cm
EDB1716NH	43 cm	41 cm	43-46 cm

Product Code	Width	Height	Fits Wheelchair Width
EDB1718NH	43 cm	46 cm	43-46 cm
EDB1720NH	43 cm	51 cm	43-46 cm
EDB1812NH	46 cm	31 cm	46-48 cm
EDB1816NH	46 cm	41 cm	46-48 cm
EDB1818NH	46 cm	46 cm	46-48 cm
EDB1820NH	46 cm	51 cm	46-48 cm
EDB1912NH	48 cm	31 cm	48-51 cm
EDB1916NH	48 cm	41 cm	48-51 cm
EDB1918NH	48 cm	46 cm	48-51 cm
EDB1920NH	48 cm	51 cm	48-51 cm
EDB2012NH	51 cm	31 cm	51-53 cm
EDB2016NH	51 cm	41 cm	51-53 cm
EDB2018NH	51 cm	46 cm	51-53 cm
EDB2020NH	51 cm	51 cm	51-53 cm



## Elite Back spare covers

Product Code	Description	Product Code	Description
PBEC1210	Fits PBE1210	PBEC1616	Fits PBE1616
PBEC1212	Fits PBE1212	PBEC1618	Fits PBE1618
PBEC1214	Fits PBE1214	PBEC1620	Fits PBE1620
PBEC1216	Fits PBE1216	PBEC1710	Fits PBE1710
PBEC1218	Fits PBE1218	PBEC1712	Fits PBE1712
PBEC1310	Fits PBE1310	PBEC1716	Fits PBE1716
PBEC1312	Fits PBE1312	PBEC1718	Fits PBE1718
PBEC1314	Fits PBE1314	PBEC1720	Fits PBE1720
PBEC1316	Fits PBE1316	PBEC1810	Fits PBE1810
PBEC1318	Fits PBE1318	PBEC1812	Fits PBE1812
PBEC1410	Fits PBE1410	PBEC1816	Fits PBE1816
PBEC1412	Fits PBE1412	PBEC1818	Fits PBE1818
PBEC1414	Fits PBE1414	PBEC1820	Fits PBE1820
PBEC1416	Fits PBE1416	PBEC1910	Fits PBE1910
PBEC1418	Fits PBE1418	PBEC1912	Fits PBE1912
PBEC1420	Fits PBE1420	PBEC1916	Fits PBE1916
PBEC1510	Fits PBE1510	PBEC1918	Fits PBE1918
PBEC1512	Fits PBE1512	PBEC1920	Fits PBE1920
PBEC1516	Fits PBE1516	PBEC2010	Fits PBE2010
PBEC1518	Fits PBE1518	PBEC2012	Fits PBE2012
PBEC1520	Fits PBE1520	PBEC2016	Fits PBE2016
PBEC1610	Fits PBE1610	PBEC2018	Fits PBE2018
PBEC1612	Fits PBE1612	PBEC2020	Fits PBE2020

## Full Back spare covers

Product Code	Description
PBEC1620-FB	Fits PBE1620-FB
PBEC1720-FB	Fits PBE1720-FB
PBEC1820-FB	Fits PBE1820-FB
PBEC1920-FB	Fits PBE1920-FB
PBEC2020-FB	Fits PBE2020-FB

## Elite Deep Back Covers

Product Code	Description	Product Code	Description
EDBC1412	Fits EDB1412	EDBC1720	Fits EDB1720
EDBC1216	Fits EDB1216	EDBC1812	Fits EDB1812
EDBC1418	Fits EDB1418	EDBC1816	Fits EDB1816
EDBC1420	Fits EDB1420	EDBC1818	Fits EDB1818
EDBC1512	Fits EDB1512	EDBC1820	Fits EDB1820
EDBC1516	Fits EDB1516	EDBC1912	Fits EDB1912
EDBC1518	Fits EDB1518	EDBC1916	Fits EDB1916
EDBC1520	Fits EDB1520	EDBC1918	Fits EDB1918
EDBC1612	Fits EDB1612	EDBC1920	Fits EDB1920
EDBC1614	Fits EDB1614	EDBC2012	Fits EDB2012
EDBC1618	Fits EDB1618	EDBC2016	Fits EDB2016
EDBC1620	Fits EDB1620	EDBC2018	Fits EDB2018
EDBC1712	Fits EDB1712	EDBC2020	Fits EDB2020
EDBC1716	Fits EDB1716		
EDBC1718	Fits EDB1718		

Please note, dimensions have been rounded to the nearest centimetre for your convenience. For more accurate dimensions in millimetres please see Technical Specifications on pages 10 and 11.

## Lateral Options for *Matrx Elite Back*



### Fixed

6 cm of vertical adjustment on back shell. Mount inside back shell without interfering with depth/angle adjustment. Available in standard Length 19cm x Height 13cm and paediatric Length 14cm x Height 8cm sizes.

- **PBLS-L** Standard Left Lateral (each) complete with Pad (19 cm L x 13 cm H).
- **PBLS-R** Standard Right Lateral (each) complete with Pad (19 cm L x 13 cm H).
- **PBSS-L** Small Left Lateral (each) complete with Pad (14 cm L x 8 cm H).
- **PBSS-R** Small Right Lateral (each) complete with Pad (14 cm L x 8 cm H).



### Offset Fixed

Provides an additional 8 cm of vertical position (higher or lower) relative to mounting slots. Available L - 19cm x H - 13cm.

- **PBOL-L OR PBOL-R** Offset Left or Right Fixed Lateral complete with Pad (each).



### Swing-Away

6 cm of vertical adjustment on back pan. Mount inside back shell without interfering with depth/angle adjustment. Easy push button release 4 pad sizes. Swings completely behind back for transfers. Does not interfere with flip-back arms. Pads ordered separately (see below).

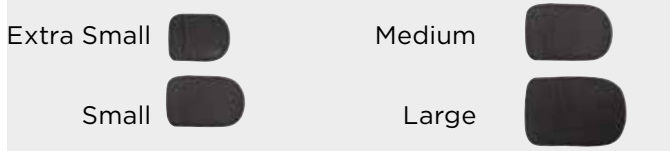
- **SAHEB** Left or Right Swing Away Lateral (each).



### Offset Swing-Away

Provides an additional 8 cm of vertical position (higher or lower). Mount inside back shell without interfering with depth/angle adjustment. Easy push button release, 4 pad sizes. Pads ordered separately (see 'Lateral Pads' below).

- **OSAH-L OR OSAH-R** Offset Left or Right Swing Away Lateral (each).



### Lateral Pads

To be used in conjunction with SwingAway and Offset SwingAway Laterals (for *Elite Back*):

- **EPAD-XS** Extra Small 11 cm (L) x 8 cm (W) (each).
- **EPAD-S** Small 13 cm (L) x 9 cm (W) (each).
- **EPAD-M** Medium 15 cm (L) x 10 cm (W) (each).
- **EPAD-L** Large 17 cm (L) x 11 cm (W) (each).

Please note, dimensions have been rounded to the nearest centimetre for your convenience. For more accurate dimensions in millimetres please see Technical Specifications on pages 10 and 11.

## Headrest options



### Headrest Adapter

Allows the headrest to be mounted directly onto *Invacare Matrx Elite backs*. Available in 3 sizes.

- Small: For attachment of headrests to Elite Backs up to 31 cm wide
- Medium: For attachment of headrests to Elite Backs 33 - 43 cm wide
- Large: For attachment of headrests to Elite Backs 46 - 51 cm wide



### Soft Pad Headrest Kit - PHRK

- Multi-Axis hardware
- Dual Pivot ball for pad orientation
- Depth adjustable through horizontal slide bar
- 25 cm soft pad
- For more adjustment capabilities see *Matrx Elan* headrest



### Headrest Cutout Reinforcement

The *Matrx PB and Elite Backs* are prepared for the easy attachment of headrests through pre-drilled holes and a cutout area on the upholstery of the outer cover. This will prevent fraying of the fabric as well as allow easy removal of the cover for laundering without having to remove the headrest attachment plate.



The *Invacare Matrix PB Posture Back* is contoured to provide midline support and positioning. The extensive range of sizes provides exceptional support and comfort for a variety of individuals.

**Foam:**

- Moulded foam wraps around shell for maximum comfort and protection

**Outer cover:**

- Moisture resistant and breathable

**Sacral/lumbar support:**

- Includes removable positioning pad

**Back shell:**

- Contoured shell provides exceptional midline support and positioning
- Durable, lightweight back shell includes built-in plate for headrest attachment

**Hardware (ordered separately):**

- Hardware installed and adjusted in minutes – adjustments can be made while the individual is seated in the wheelchair
- Easy Set (quick release), Split or Fixed mounting hardware available
- Refer to Hardware page 8

**13 cm Contour Depth-standard**



**Sacral/lumbar support**

Posture Back sizes		Heavy-Duty sizes		
Width	36cm/14"	Width	51cm/20"	
	41cm/16"		56cm/22"	
	43cm/17"		61cm/24"	
	46cm/18"		Height	41cm/16"
	51cm/20"			51cm/20"
Height	31cm/12"	Weight Capacity	227kg (35.7 stone)	
	41 cm/16"			
	51 cm/20"			
Weight Capacity	136 kg (21.4 stone)	<b>Extra Wide sizes</b>		
Width	61-76cm/24-30"			
	Height	41cm/16"		
		51cm/20"		
Weight Capacity	227kg (35.7 stone)			

PB BACK			
Product Code	Width	Height	Fits Wheelchair Width
MPB1412NH	36cm/14"	31cm/12"	33-38 cm
MPB1416NH	36cm/14"	41cm/16"	33-38 cm
MPB1612NH	41cm/16"	31cm/12"	38-43 cm
MPB1616NH	41cm/16"	41cm/16"	38-43 cm
MPB1620NH	41cm/16"	51cm/20"	38-43 cm
MPB1712NH	43cm/17"	31cm/12"	41-46 cm
MPB1716NH	43cm/17"	41cm/16"	41-46 cm
MPB1720NH	43cm/17"	51cm/20"	41-46 cm
MPB1812NH	46cm/18"	31cm/12"	43-48 cm
MPB1816NH	46cm/18"	41cm/16"	43-48 cm
MPB1820NH	46cm/18"	51cm/20"	43-48 cm
MPB2012NH	51cm/20"	31cm/12"	48-51 cm
MPB2016NH	51cm/20"	41cm/16"	48-51 cm
MPB2020NH	51cm/20"	51cm/20"	48-51 cm

HEAVY DUTY PB BACK	
Product Code	
Back	Fits Wheelchair Width
HDB2016	51-53cm/20-21"
HDB2020	51-53cm/20-21"
HDB2216	56-59cm/22-23"
HDB2220	56-59cm/22-23"
HDB2416	61-64cm/24-25"
HDB2420	61-64cm/24-25"
HDBWW16	Fits wheelchair width Up to 76cm/30"
HDBWW20	Fits wheelchair width Up to 76cm/30"



The *Invacare Matrix PB Deep back* provides the same features as the standard Posture Back with increased contour depth for more midline guidance and positioning.

**Foam**

- Molded foam wraps around shell for maximum comfort and protection

**Outer cover:**

- Moisture resistant and breathable

**Sacral/lumbar support:**

- Includes removable positioning pad

**Back shell:**

- Deep contoured shell provides exceptional midline support and positioning
- Durable, lightweight back shell includes built-in plate for headrest attachment

**Hardware (ordered separately):**

- Hardware installed and adjusted in minutes – adjustments can be made while the individual is seated in the wheelchair
- Easy Set (quick release), Split or Fixed mounting hardware available
- Refer to Hardware page 8

**18 cm Contour Depth-deep**



**Sacral/lumbar support**

**Deep PB back sizes**

<b>Width</b>	36 cm, 41 cm, 43 cm, 46 cm, 51 cm
<b>Height</b>	31 cm, 41 cm, 51 cm
<b>Weight Capacity</b>	136 kg (21.4 stone)

**Heavy-Duty sizes**

<b>Width</b>	51 cm, 56 cm, 61 cm
<b>Height</b>	41 cm, 51 cm
<b>Weight Capacity</b>	227 kg (35.7 stone)

**Extra Wide sizes**

<b>Width</b>	61-76 cm
<b>Height</b>	41 cm, 51 cm
<b>Weight Capacity</b>	227 kg (35.7 stone)

PB DEEP BACK			
Product Code	Width	Height	Fits Wheelchair Width
PBD1412NH	36cm/14"	31cm/12"	33-38 cm
PBD1416NH	36cm/14"	41cm/16"	33-38 cm
PBD1612NH	41cm/16"	31cm/12"	38-43 cm
PBD1616NH	41cm/16"	41cm/16"	38-43 cm
PBD1620NH	41cm/16"	51cm/20"	38-43 cm
PBD1712NH	43cm/17"	31cm/12"	41-46 cm
PBD1716NH	43cm/17"	41cm/16"	41-46 cm
PBD1720NH	43cm/17"	51cm/20"	41-46 cm
PBD1812NH	46cm/18"	31cm/12"	43-48 cm
PBD1816NH	46cm/18"	41cm/16"	43-48 cm
PBD1820NH	46cm/18"	51cm/20"	43-48 cm
PBD2012NH	51cm/20"	31cm/12"	48-53 cm
PBD2016NH	51cm/20"	41cm/16"	48-53 cm
PBD2020NH	51cm/20"	51cm/20"	48-53 cm

HEAVY DUTY PB DEEP BACK	
Product Code	
Back	Fits Wheelchair Width
DHD2016	51-53cm/20-21"
DHD2020	51-53cm/20-21"
DHD2216	56-59cm/22-23"
DHD2220	56-59cm/22-23"
DHD2416	61-64cm/24-25"
DHD2420	61-64cm/24-25"
DHDWW16	Fits wheelchair widths Upto 76cm/30"
DHDWW20	Fits wheelchair widths Upto 76cm/30"

The *Invacare Matrix Easy Set hardware* is easily installed in minutes, and all adjustments can be made with the individual seated in the wheelchair.



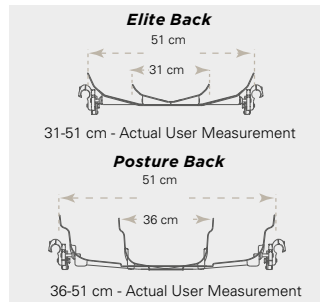
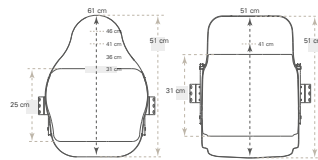
**Key Features and Functional Benefits**

- Quick release for easy portability
- Adjustment of depth 10.2 cm, angle (40°) and rotation
- Standard fits 1.9 cm, 2.2 cm and 2.5 cm diameter canes
- Option to fit to 2.9cm diameter back canes

**Optional Privacy Flap Attachment**

All **Matrix PB Backs** and **Matrix Elite Backs** include loop fasteners for easy addition of the optional Privacy Flap. Four standard sizes of Privacy Flaps are available to fit all standard **Elite** and **Elite deep** backs from 30.5 to 50.5 cm wide. Model numbers PLAP-XS, PLAP-S and PLAP-M/L.

**Features and options**



**Styles**

*Invacare Matrix backs:* Elite, Elite Deep, PB and PB Deep are interchangeable on the **Easy Set Hardware**.

**Heights**

Several back heights available to provide support from low to upper thoracic.

**Widths**

Backs widths from 31-51cm/12-20" are available to provide exact fit for each individual.

**Contour Depth**

Choice of 4 contour depths for appropriate midline support requirements.

**Accessories - Mounting Pins**

**Standard Mounting Pins**

Standard mounting pins (included with all *Invacare Matrix PB/Elite backs*) allow the backrest to fit chairs 2.5 cm narrower or the same width.

**Longer Mounting Pins**

Longer mounting pins (included with all *Invacare Matrix PB/Elite backs*) allow the backrest to fit chairs 2.5 cm wider.



**Extended Mounting Pins**

Optional extended mounting pins available for *Invacare Matrix PB & Elite Backs* (Not available on Heavy Duty PB backs) allows the back to fit chairs up to 5 cm wider.



## Easy Set Hardware Adjustments



### Depth

Adjusts 5 cm behind back canes.



### Depth

Adjusts 5 cm in front of back canes.



### Angle

20° anterior range of back angle adjustment.



### Angle

20° posterior range of back angle adjustment.



### Rotation

Back may be orientated to accommodate pelvic/trunk rotation.

PBMH - Fits 190, 220 and 250mm back canes  
 PBMHQ - Fits 290mm back canes

## Other Mounting Hardware Options



### Heavy Duty "Easy-Set" Mounting Hardware - HDMH

- Standard with Heavy-Duty Posture Backs
- Recommended for individuals over 136 kg, high tone or heavy use



### Fixed Space Saver Mounting Hardware - FSSH

- Non-Portable
- Requires tools for removal of back from wheelchair
- Saves space for tighter width applications
- Fully adjustable



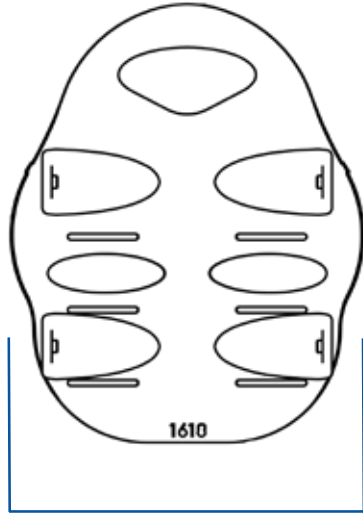
### Split Mounting Hardware SMH

- Provides clearance of mid back cane rigidizer bars or other impedences on the back canes
- Not recommended for Heavy-Duty Posture backs

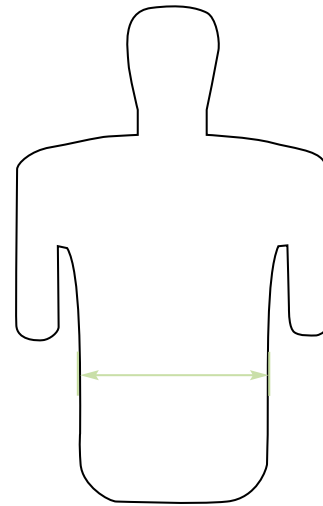
## Invacare **Matrix Back Specifications**



**C - Contour depth**



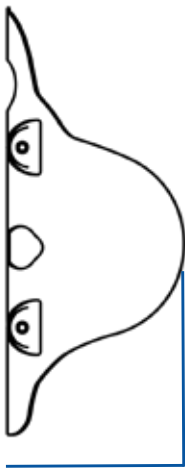
**A - Outer width**



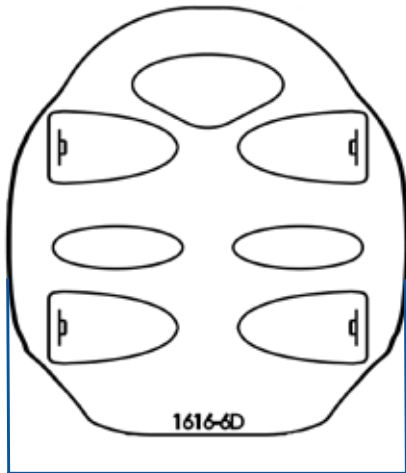
**B - Trunk Width**

### Invacare **Matrix Elite Back Support**

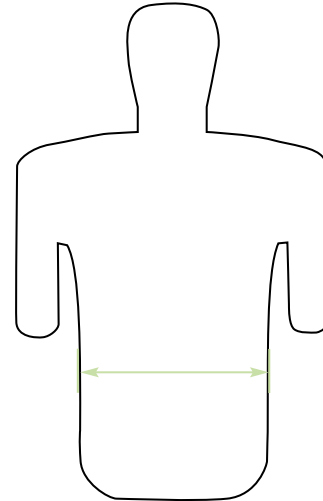
Back Height	255 mm, 305 mm, 355 mm (available in 305 mm, 330 mm, and 355 mm widths), 405 mm, 455 mm, 505 mm									
Width	305 mm	330 mm	355 mm	380 mm	405 mm	430 mm	455 mm	480 mm	505 mm	
<b>Back Shell Only</b>										
A-Outer Width	245 mm	260 mm	315 mm	340 mm	365 mm	390 mm	415 mm	440 mm	465 mm	
C-Contour Depth	76 mm	76 mm	90 mm	90 mm	90 mm	90 mm	90 mm	90 mm	90 mm	
<b>Back Shell with Cover &amp; Foam</b>										
B-Trunk Width	175 mm	200 mm	250 mm	275 mm	300 mm	325 mm	350 mm	375 mm	400 mm	



**C - Contour depth**



**A - Outer width**



**B - Trunk Width**

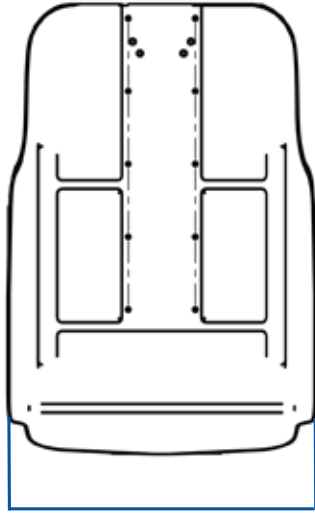
### Invacare **Matrix Elite Deep Back**

Back Height	305 mm, 405 mm, 455 mm, 505 mm									
Width	355 mm	380 mm	405 mm	430 mm	455 mm	480 mm	505 mm			
<b>Back Shell Only</b>										
A-Outer Width	335 mm	360 mm	385 mm	410 mm	435 mm	460 mm	480 mm			
C-Contour Depth	155 mm	155 mm	155 mm	155 mm	155 mm	155 mm	155 mm	155 mm		
<b>Back Shell with Cover &amp; Foam</b>										
B-Trunk Width	250 mm	275 mm	300 mm	325 mm	350 mm	375 mm	400 mm			
Depth adjustment	100 mm (50 mm in front or behind)									
Angle Adjustment	40 °									
Product Weight	Standard - 1.36 kg Deep - 1.81 kg									
Weight Capacity	136 kg									
Warranty	2 years									

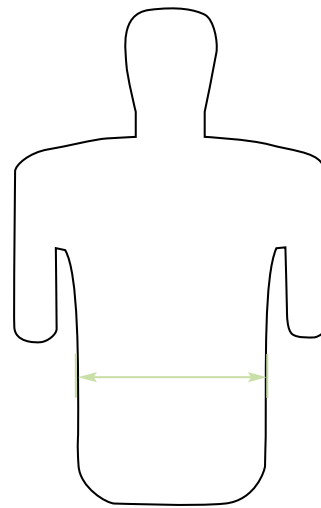
## Invacare **Matrix Back Specifications**



**C - Contour depth**



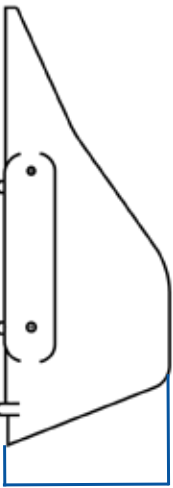
**A - Outer width**



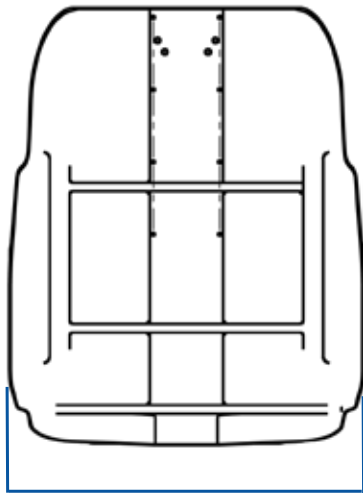
**B - Trunk Width**

### Invacare **Matrix PB Back**

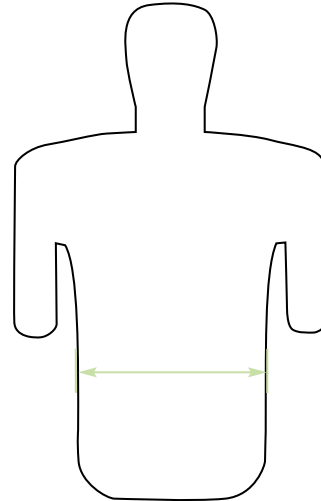
Back Height	305 mm, 405 mm, 505 mm				
Width	355 mm	405 mm	430 mm	455 mm	505 mm
<b>Back Shell Only</b>					
A-Outer Width	310 mm	360 mm	385 mm	420 mm	465 mm
C-Contour Depth	125 mm	125 mm	125 mm	125 mm	125 mm
<b>Back Shell with Cover &amp; Foam</b>					
B-Trunk Width	230 mm	275 mm	300 mm	330 mm	375 mm



**C - Contour depth**



**A - Outer width**







**B - Trunk Width**

### Invacare **Matrix PB Deep Back**

Back Height	305 mm, 405 mm, 505 mm				
Width	355 mm	405 mm	430 mm	455 mm	505 mm
<b>Back Shell Only</b>					
A-Outer Width	320 mm	370 mm	395 mm	435 mm	475 mm
C-Contour Depth	178 mm	178 mm	178 mm	178 mm	178 mm
<b>Back Shell with Cover &amp; Foam</b>					
B-Trunk Width	230 mm	275 mm	300 mm	330 mm	375 mm
Depth adjustment	100 mm (50 mm in front or behind)				
Angle Adjustment	40 °				
Product Weight	Standard - 1.81 kg Deep - 2.25 kg				
Weight Capacity	Standard - 136kg Deep - 227kg				
Warranty	2 years				

## Technical data

For more comprehensive pre-sales information about this product, including the product's user manual, please visit [www.invacare.co.uk](http://www.invacare.co.uk)

	Width	Back shell weight	Max. cleaning temperature	Max. user weight
				
<b>Elite Back</b>	12-20 inches	1.36 kg	Cover: 60°	136 kg
<b>Elite Deep Back</b>	14-20 inches	1.81 kg	Cover: 60°	136 kg
<b>PB Back</b>	14-20 inches	1.81 kg	Cover: 60°	136 kg
<b>PB Deep Back</b>	14-20 inches	2.25 kg	Cover: 60°	136 kg
<b>HD PB Back</b>	20-30 inches	3.15 kg	Cover: 60°	227 kg
<b>HD PB Deep Back</b>	20-30 inches	3.70 kg	Cover: 60°	227 kg



Crash Testing

### Fire Testing:

EN 1021: Part 1 & 2

### Bio-Compatibility:

ISO 10993-5

## Colour

Mesh Tex fabric



Please notice colors may vary slightly from those displayed above.



Invacare® | **Matrix® MX2 Backrest**

Specially engineered carbon fibre providing unmatched stability for ultimate freedom and performance

**matrix**  
SEATING SERIES

**INVACARE**  
Yes, you can.



Designed for active individuals, the **MX2** is an ultra lightweight backrest with a fresh look and attractive design. A stylish add-on to any lightweight manual wheelchair, the **MX2** offers exceptional support to the lower trunk and pelvis, adding comfort and stability for optimised function – either to self-propel or engage in day to day activities.

With the **MX2**, you have it all – aesthetics, support, comfort and functionality.



### Lightweight carbon fibre shell

The **MX2** has been specially designed using several layers of carbon fibre to optimise flex and shock absorption. This means that the backrest will have the flexibility to accommodate the individual's movements whilst helping to keep them in a midline position; which is exactly what an active person needs – stable freedom of movement. It will also play a major role in vibration dampening, especially when combined with the carbon fixation hardware, which enables individuals to ride more comfortably.

### The perfect shape

The **MX2** offers a 76 mm depth of anatomical contouring for enhanced lateral stability and immersion of the trunk. Lateral cutouts for the hips allow increased freedom of movement; ideal when leaning laterally for pressure relief or when reaching to pick up objects. The scapula cutout allows for freedom of movement of the shoulder blade, without compromising on support, allowing the individual to self-propel efficiently, even with a higher back.



### Back shell

- Available in four heights and five widths allowing everyone to find a perfect match
- Cutouts for breathability to help manage microclimate
- Slotted design to allow height adjustments even when the individual is in the chair
- Breathable Spacer cover – backrests 230 mm or higher come with leatherette side panels
- Oversized foam for enhanced comfort and protection



### Easy fit hardware

The **MX2** comes available with two types of hardware – Fixed Mount or Mini Set (quick release) – both allowing for 3D adjustment in:

- Height
- Depth (76 mm with fixed hardware; 108 mm with easy set hardware) and Angle ( $\pm 15^\circ$  stepless)
- Rotation

The backrest hardware is also width adjustable, allowing the backrest to be fitted to wheelchairs that are up to 25 mm narrower or wider than the actual backrest width – an ideal feature for those with a wider back and narrower hips, or a narrow back and wider hips.

All of these adjustment possibilities ensure a precise fit and positioning in every rigid or folding wheelchair frame with a backrest tube diameter of 19 mm, 22 mm and 25 mm.



### Fixed mount

Constructed with a carbon fibre plate to reduce overall weight.

### Easy Set (quick release)

Easy to remove for portability.



## Features and options

### Privacy flap

An optional privacy flap which covers the opening between the seat and back.



### Positioning Pad

A lumbar pad is included as standard, providing lower back support for those who need additional comfort.

## Technical data

For more comprehensive pre-sales information about this product, including the product's user manual, please visit [www.invacare.co.uk](http://www.invacare.co.uk)

	Width	Height	Angle adjustment	Depth adjustment	Total product weight	Cover cleaning temperature	Max. user weight	Limited warranty
<b>Matrix MX2</b>	355, 380, 405, 430, 455 mm	150, 230, 310, 410 mm	+/- 15°	76 mm <sup>1</sup> 108 mm <sup>2</sup>	starting 770 gr and up (with fixed hardware included)	60°	113kg (17 stone)	2 years

1. With Fixed Hardware
2. With Quick Release Hardware

## Colour

Spacer fabric







Invacare®

# Matrix® Elan Headrests

Highly-adjustable support and comfort

**matrix**  
SEATING SERIES

**INVACARE**  
Yes, you can.



The elegant *Invacare Matrix Elan* takes our seating range to the next level with its compact, lightweight and adjustable design. The headrest offers superb support and comfort and compliments a full range of paediatric through to adult applications. Key features include:

- Highly adjustable hardware
- Tool-less swingback
- Range of pad options



### Highly adjustable hardware

- The innovative hardware on the Elan headrest has six points of adjustment to provide infinite positioning opportunities, including a swing away function, to assist with transfers
- The headrests can be set up quickly and effectively with a single tool while the multi-disk locking feature provides superior holding strength and reliability
- The tool-less adjustment levers make it easy to change the position of the headrest to meet individual's needs
- There are two post options available, the standard adult (380mm) or the mini (280 mm), which can be retro-fitted to Matrix receivers and are compatible with a number of other headrest receivers on the market



## Range of pad options



### 3 Standard pad options

Ellipse-shaped headrest pads for posterior and lateral support. Can be moulded to fit the shape of the person's head. Available in 3 sizes: 150 x 90 mm, 250 x 130 mm or 360 x 130 mm.



### 2 Occipital pad options

Provides contoured support to the occipital and sub-occipital areas of the head. Available in two sizes: 230 x 180 mm or 310 x 200 mm.



### 4-point support

Provides 4 points of support to the occipital and temporal areas of the head for optimum positioning while carefully constructed to fit around the ears. Available in size 280 x 260 mm.

## Features

### 2 tailored cover options

The standard pad cover (Startex fabric) is breathable and sweatresistant. The infection control cover (reverse Startex) is the easy clean version. Both cover options are easy to remove thanks to the elongated dual zip.



### Dual density foam

The high density moulded foam provides immersion, comfort, protection and prevents bottoming out. The *Invacare Matrix* pads are 45% lighter than most other pads on the market and surround the edges of the backing plates for extra protection.



### Tool-less adjustments

- 1 Adjustment levers allow easy position changes. Fixed screws provided if set position desired.
- 2 Attachment knob has a slim, ergonomic design to allow easy headrest removal or height adjustment.



### Interface insert

Two adapters are available which allow the *Matrix Elan* headrest to be fitted to *Invacare Flex 3* solid or tension-adjustable backs.



### Multi-disk locking feature

The innovative locking feature provides superior holding strength and reliability.



### Adjustable aluminium plates

All pad options can be hand-shaped to fit the needs of the person.

## Technical data

For more comprehensive pre-sales information about this product, including the product's user manual, please visit [www.invacare.co.uk](http://www.invacare.co.uk)

### Hardware Options

Elan Standard Hardware	380 mm Vertical Post
Elan Mini Hardware	280 mm Vertical Post



**matrix**<sup>®</sup>  
SEATING SERIES

### Pad Options

150 mm Ellipse Pad	150 x 90 mm
250 mm Ellipse Pad	250 x 130 mm
360 mm Ellipse Pad	360 x 130 mm
230 mm Occipital Pad	230 x 180 mm
310 mm Occipital Pad	310 x 200 mm
Standard 4 point pad	280 x 260 mm
Small 4 Point pad	230 x 180 mm

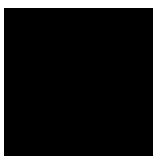
### Family of seating products

Invacare offer a complete rehabilitation solution: cushion, back support, belt/harness and headrest.

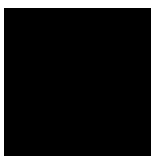


## Cover options

Startex



Infection control





Invacare® | **Matrix® Flo-tech™ Back Support**

The **Matrix Flo-tech Back Support** Range

**matrix**  
SEATING SERIES

**INVACARE**  
Yes, you can.

The *Invacare* **Matrx Flo-tech Back Support** range has been designed to provide added stability to individuals in a wheelchair or standard armchair and it can be used in conjunction with any **Matrx Flo-tech** cushion.

The **Matrx Flo-tech Back Support** range provides excellent comfort and improved user positioning, which in turn helps to improve or maintain independence whilst in the seated position in a wheelchair or armchair. The unique supportive design offers protection from pressure ulcer formation and spinal deformities which can cause severe pain.

## A highly protective Back Support

The **Back Support** provides a high degree of stability and protection from pressure ulcer development.

## The added support of the Lumbar

The **Back Support with Lumbar** can be used for those patients who wish to have increased lateral and pelvic stability. The Visco Elastic Lumbar Support contours to the individual and can be easily adjusted and secured with hook and loop fastener pads, to accommodate a range of heights.

## Features and Options



### Cover is moisture resistant

Cover is two-way stretch, moisture-resistant and vapour-permeable, which helps to prevent a build up of shear and friction forces.



### Extendable Straps

Offers a securely fixed **Back Support** on a standard armchair or wheelchair. The straps are easy to adjust and can be fixed to a position to provide maximum comfort and support.







### Ultra-fresh™ added to all Flo-tech foam for antimicrobial and odour protection

Antimicrobial treatment that has been added to all **Flo-tech** foam to help make it resistant to the growth of odour causing bacteria. Helps provide longer lasting freshness.

## Technical data

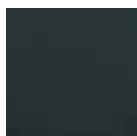
For more comprehensive pre-sales information about this product, including the product's user manual, please visit [www.invacare.co.uk](http://www.invacare.co.uk)

	Max. user weight	Max. cleaning temperature	Total product weight	Warranty
	165 kg	 80°	 1.1 kg	 3 years

Back Support and Lumbar are manufactured to European Standards: BS EN 1021-1 Cig, BS EN 1021-2 Match and BS 5852: Crib 5

## Colours

Black Smooth









# Meet the Specialist Seating & Positioning team



**Peter Hubbard**  
National Sales Manager  
07977 980 734  
phubbard@invacare.com



**Andy Boyes**  
North  
07973 830 336  
aboyes@invacare.com



**Adrian Turner**  
Central  
(covering Home Counties)  
07967 185 839  
aturner@invacare.com



**Steve Nash**  
Wales & South West  
07970 112 992  
snash@invacare.com



**Jim Gaw**  
Scotland  
07506 487 859  
jgaw@invacare.com



**Matt Mohr**  
London & South East  
07903 298 979  
mmohr@invacare.com



**Michael McQuitty**  
Northern Ireland  
07977 409 252  
mmcquitt@invacare.com



Tel: +44 1 656 776 222  
Fax: +44 1656 776 220  
E-mail: [uk@invacare.com](mailto:uk@invacare.com)  
Sales Order E-mail:  
[ordersuk@invacare.com](mailto:ordersuk@invacare.com)  
[www.invacare.co.uk](http://www.invacare.co.uk)

Invacare Limited  
Pencoed Technology Park  
Pencoed - Bridgend CF35  
5AQ - United Kingdom

Tel. +353 1 8107084  
Fax +353 1 8107085  
Email: [ireland@invacare.com](mailto:ireland@invacare.com)  
[www.invacare.ie](http://www.invacare.ie)

Invacare Ireland Ltd  
Unit 5 - Seatown Business  
Campus  
Seatown Road  
SWORDS - County Dublin  
- Ireland

